

TAS2R40 Antibody

Catalog No: #44624

Package Size: #44624-1 50ul #44624-2 100ul

Orders: order@signalwayantibody.com

Support: tech@signalwayantibody.com

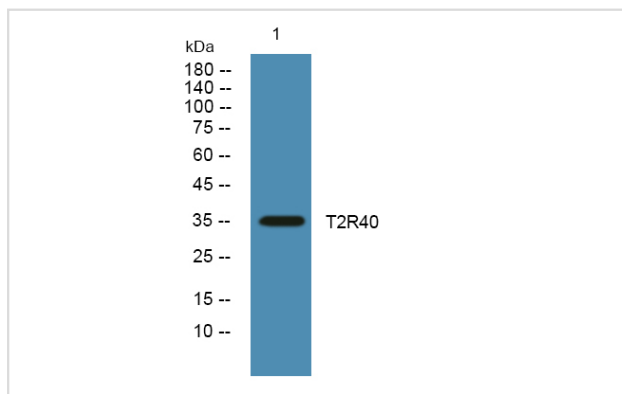
Description

Product Name	TAS2R40 Antibody
Host Species	Rabbit
Clonality	Polyclonal
Purification	Immunogen affinity purified
Applications	WB
Species Reactivity	Hu Ms Rt
Specificity	TAS2R40 Antibody detects endogenous levels of total TAS2R40
Immunogen Type	Peptide
Immunogen Description	A synthesized peptide derived from human TAS2R40
Target Name	TAS2R40
Other Names	GPR60, Taste receptor type 2 member 40, T2R40
Accession No.	Swiss-Prot#: P59535 NCBI Gene ID:259286
Uniprot	P59535
GeneID	259286;
Calculated MW	37 kDa
Concentration	1.0mg/mL
Formulation	Rabbit IgG in phosphate buffered saline , pH 7.4, 150mM NaCl, 0.02% sodium azide and 50% glycerol.
Storage	Store at -20°C

Application Details

Western blotting: 1:1000-3000

Images



Western blot analysis of lysates from K562 cells, primary antibody was diluted at 1:1000, 4° over night

Note: This product is for in vitro research use only