

TAS1R2 Antibody

Catalog No: #44635

Package Size: #44635-1 50ul #44635-2 100ul

Orders: order@signalwayantibody.com

Support: tech@signalwayantibody.com

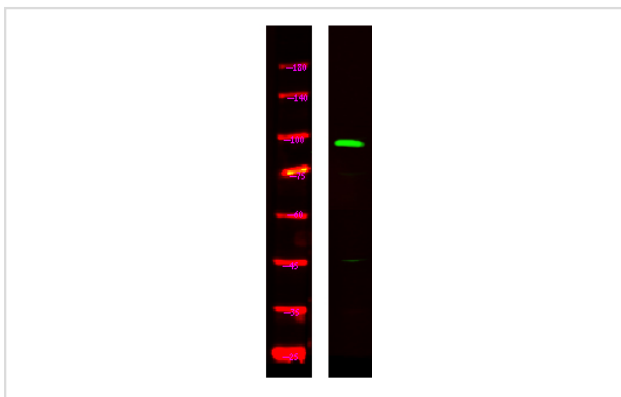
Description

Product Name	TAS1R2 Antibody
Host Species	Rabbit
Clonality	Polyclonal
Purification	Immunogen affinity purified
Applications	WB
Species Reactivity	Hu Ms Rt
Specificity	TAS1R2 Antibody detects endogenous levels of total TAS1R2
Immunogen Type	Peptide
Immunogen Description	A synthesized peptide derived from human TAS1R2
Target Name	TAS1R2
Other Names	TAS1R2, G protein-coupled receptor 71, GPR71, GPCRB4, T1R2, Taste receptor type 1 member 2, TR2, Sweet taste receptor T1R2, G-protein coupled receptor 71
Accession No.	Swiss-Prot#: Q8TE23NCBI Gene ID:80834
Uniprot	Q8TE23
GeneID	80834;
Calculated MW	95 kDa
Concentration	1.0mg/mL
Formulation	Liquid in PBS containing 50% glycerol, and 0.02% sodium azide.
Storage	Store at -20°C

Application Details

Western blotting: 1:1000-3000

Images



Western Blot analysis of HeLa lysates, using primary antibody at 1:1000 dilution.

Note: This product is for in vitro research use only