

Integrin alpha6 antibody

Catalog No: #23027

Orders: order@signalwayantibody.com

Support: tech@signalwayantibody.com

Description

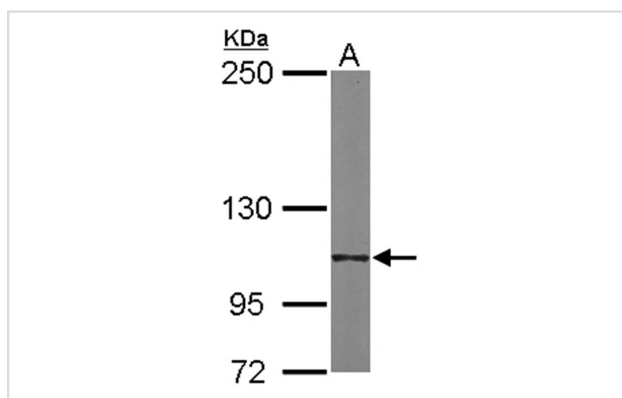
Product Name	Integrin alpha6 antibody
Host Species	Rabbit
Clonality	Polyclonal
Purification	Purified by antigen-affinity chromatography.
Applications	WB
Species Reactivity	Hu
Immunogen Type	Recombinant protein
Immunogen Description	Recombinant protein fragment contain a sequence corresponding to a region within amino acids 526 and 803 of Human ITGA6
Target Name	Integrin alpha6
Other Names	CD49f; DKFZp686J01244; FLJ18737; ITGA6B; VLA-6
Accession No.	Swiss-Prot:P23229Gene ID:3655
Uniprot	P23229
GeneID	3655;
Concentration	0.6mg/ml
Formulation	Supplied in 0.1M Tris-buffered saline with 10% Glycerol (pH7.0). 0.01% Thimerosal was added as a preservative.
Storage	Store at -20°C for long term preservation (recommended). Store at 4°C for short term use.

Application Details

Predicted MW: 120kd

Western blotting: 1:500-1:3000

Images



Sample (20 ug of whole cell lysate)
 A: human ESC
 5% SDS PAGE
 Primary antibody diluted at 1: 2000

Background

The ITGA6 protein product is the integrin alpha chain alpha 6. Integrins are integral cell-surface proteins composed of an alpha chain and a beta

chain. A given chain may combine with multiple partners resulting in different integrins. For example, alpha 6 may combine with beta 4 in the integrin referred to as TSP180, or with beta 1 in the integrin VLA-6. Integrins are known to participate in cell adhesion as well as cell-surface mediated signalling. Two transcript variants encoding different isoforms have been found for this gene. [provided by RefSeq]

Note: This product is for in vitro research use only