

## TAS2R46 Antibody

Catalog No: #44659

Package Size: #44659-1 50ul #44659-2 100ul

Orders: order@signalwayantibody.com

Support: tech@signalwayantibody.com

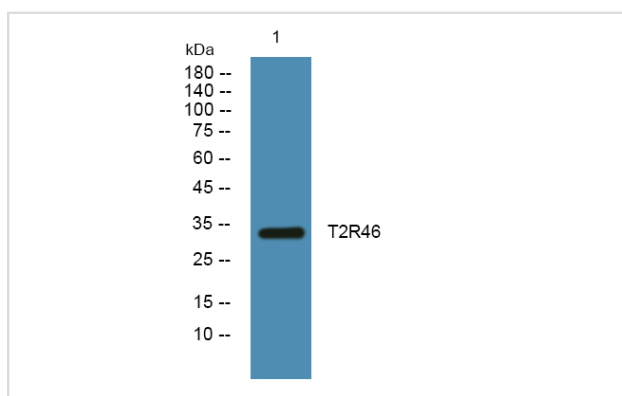
## Description

Product Name	TAS2R46 Antibody
Host Species	Rabbit
Clonality	Polyclonal
Purification	Immunogen affinity purified
Applications	WB
Species Reactivity	Hu Ms Rt
Specificity	TAS2R46 Antibody detects endogenous levels of total TAS2R46
Immunogen Type	Peptide
Immunogen Description	A synthesized peptide derived from human TAS2R46
Target Name	TAS2R46
Other Names	Taste receptor type 2 member 46 T2R46 Taste receptor type 2 member 54 T2R54
Accession No.	Swiss-Prot#: P59540NCBI Gene ID:259292
Uniprot	P59540
GeneID	259292;
Calculated MW	36 kDa
Concentration	1.0mg/mL
Formulation	Liquid in PBS containing 50% glycerol, and 0.02% sodium azide.
Storage	Store at -20°C

## Application Details

Western blotting: 1:1000-3000

## Images



Western blot analysis of lysates from SH-SY5Y cells, primary antibody was diluted at 1:1000, 4° over night

---

Note: This product is for in vitro research use only