

## TAS2R47 Antibody

Catalog No: #44660

Package Size: #44660-1 50ul #44660-2 100ul

Orders: order@signalwayantibody.com

Support: tech@signalwayantibody.com

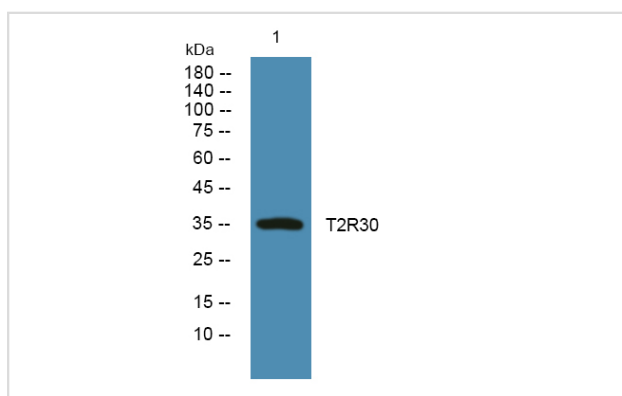
## Description

Product Name	TAS2R47 Antibody
Host Species	Rabbit
Clonality	Polyclonal
Purification	Immunogen affinity purified
Applications	WB
Species Reactivity	Hu Ms Rt
Specificity	TAS2R47 Antibody detects endogenous levels of total TAS2R47
Immunogen Type	Peptide
Immunogen Description	A synthesized peptide derived from human TAS2R47
Target Name	TAS2R47
Other Names	Taste receptor type 2 member 30 T2R30 Taste receptor type 2 member 47 T2R47, TAS2R47
Accession No.	Swiss-Prot#: P59541NCBI Gene ID:259293
Uniprot	P59541
GeneID	259293;
Calculated MW	37 kDa
Concentration	1.0mg/mL
Formulation	Liquid in PBS containing 50% glycerol, and 0.02% sodium azide.
Storage	Store at -20°C

## Application Details

Western blotting: 1:1000-3000

## Images



Western blot analysis of lysates from U2OS cells, primary antibody was diluted at 1:1000, 4° over night

---

Note: This product is for in vitro research use only