

SLC12A2 Antibody

Catalog No: #44690

Package Size: #44690-1 50ul #44690-2 100ul

Orders: order@signalwayantibody.comSupport: tech@signalwayantibody.com

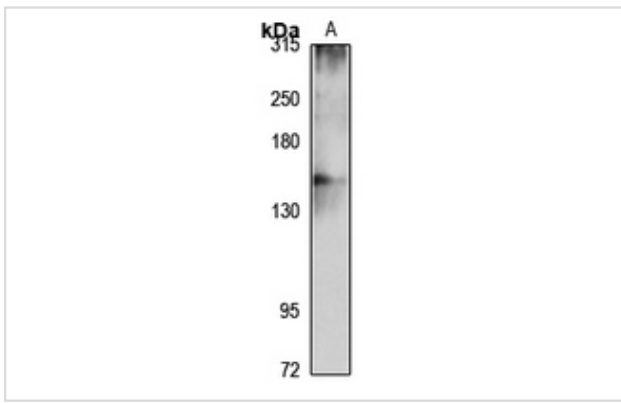
Description

Product Name	SLC12A2 Antibody
Host Species	Rabbit
Clonality	Polyclonal
Purification	Immunogen affinity purified
Applications	WB
Species Reactivity	Hu Ms Rt
Specificity	SLC12A2antibody detects endogenous levels of total?SLC12A2
Immunogen Type	Peptide
Immunogen Description	A synthesized peptide derived from human SLC12A2
Target Name	SLC12A2
Other Names	Basolateral Na-K-Cl symporter antibody BSC antibody BSC2 antibody Bumetanide-sensitive sodium-(potassium)-chloride cotransporter 1 antibody mBSC2 antibody MGC104233 antibody NKCC1 antibody S12A2_HUMAN antibody SLC12A2 antibody sodium-potassium-chloride cotransporter 1 antibody solute carrier family
Accession No.	Swiss-Prot#: P55011NCBI Gene ID:6558
Uniprot	P55011
GeneID	6558;
Calculated MW	130 kDa
Concentration	1.0mg/mL
Formulation	Liquid in 0.42% Potassium phosphate, 0.87% Sodium chloride, pH 7.3, 30% glycerol, and 0.01% sodium azide.
Storage	Store at -20°C

Application Details

WB (1/500 - 1/2000)

Images



Western blot analysis of NKCC1 expression in rat brain (A) whole cell lysates.

Note: This product is for in vitro research use only