

pan-Cytokeratin antibody

Catalog No: #23032

Orders: order@signalwayantibody.comSupport: tech@signalwayantibody.com

Description

Product Name	pan-Cytokeratin antibody
Host Species	Rabbit
Clonality	Polyclonal
Purification	Purified by antigen-affinity chromatography.
Species Reactivity	Hu Ms Rt
Immunogen Description	A synthesized peptide derived from human Keratin 10
Target Name	pan-Cytokeratin
Accession No.	NCBI Gene ID: 3858NCBI mRNA#: NM_000421NCBI Protein#: NP_000412
Uniprot	P13645
GeneID	3858;
Concentration	1mg/ml
Formulation	Rabbit IgG in phosphate buffered saline , pH 7.4, 150mM NaCl, 0.02% sodium azide and 50% glycerol.
Storage	Store at -20°C for long term preservation (recommended). Store at 4°C for short term use.

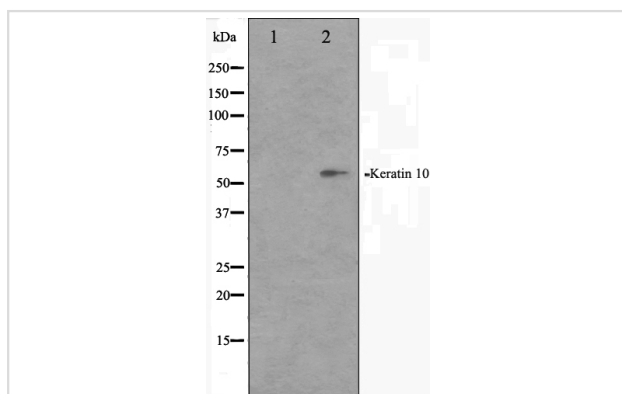
Application Details

Predicted MW: 59kd

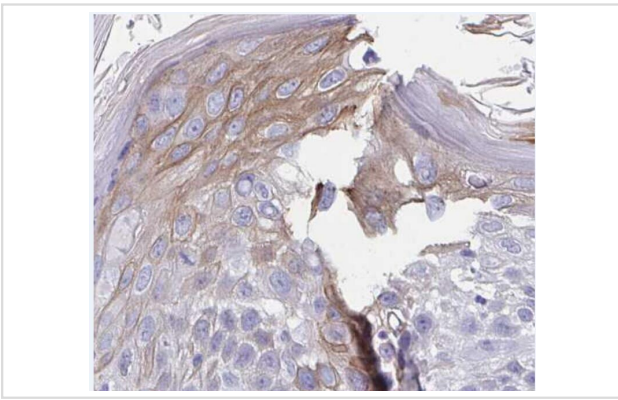
Western blotting: 1:500-1:3000

Immunohistochemistry: 1:100-1:500

Images



Western blot analysis of extracts of hela cell lines, using Keratin 10 antibody. The lane on the left is treated with the antigen-specific peptide.



Immunohistochemical analysis of paraffin-embedded human breast cancer tissue, antibody was diluted at 1:200

Background

This gene encodes a member of the type I (acidic) cytokeratin family, which belongs to the superfamily of intermediate filament (IF) proteins. Keratins are heteropolymeric structural proteins which form the intermediate filament. These filaments, along with actin microfilaments and microtubules, compose the cytoskeleton of epithelial cells. Mutations in this gene are associated with epidermolytic hyperkeratosis. This gene is located within a cluster of keratin family members on chromosome 17q21. [provided by RefSeq]

Note: This product is for in vitro research use only