

CDH12 Antibody

Catalog No: #44707

Package Size: #44707-1 50ul #44707-2 100ul

Orders: order@signalwayantibody.comSupport: tech@signalwayantibody.com

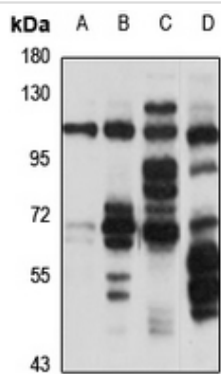
Description

Product Name	CDH12 Antibody
Host Species	Rabbit
Clonality	Polyclonal
Purification	Immunogen affinity purified
Applications	WB
Species Reactivity	Hu Ms
Specificity	CDH12antibody detects endogenous levels of total?CDH12
Immunogen Type	Peptide
Immunogen Description	A synthesized peptide derived from human CDH12
Target Name	CDH12
Other Names	Br cadherin antibody BR-cadherin antibody Brain cadherin antibody CAD12_HUMAN antibody cadherin 12 (N cadherin 2) antibody Cadherin 12 antibody Cadherin 12 precursor antibody Cadherin 12 type 2 (N cadherin 2) antibody Cadherin 12 type 2 antibody Cadherin neural type 2 antibody Cadherin-12 antibody C
Accession No.	Swiss-Prot#: P55289NCBI Gene ID:1010
Uniprot	P55289
GeneID	1010;
Calculated MW	88 kDa
Concentration	1.0mg/mL
Formulation	Liquid in 0.42% Potassium phosphate, 0.87% Sodium chloride, pH 7.3, 30% glycerol, and 0.01% sodium azide.
Storage	Store at -20°C

Application Details

WB (1/500 - 1/2000)

Images



Western blot analysis of BR Cadherin expression in U251MG (A), HepG2 (B), mouse brain (C), rat liver (D) whole cell lysates.

Note: This product is for in vitro research use only