

Laminin beta-3 antibody

Catalog No: #23034

Orders: order@signalwayantibody.com

Support: tech@signalwayantibody.com

Description

Product Name	Laminin beta-3 antibody
Host Species	Rabbit
Clonality	Polyclonal
Purification	Purified by antigen-affinity chromatography.
Applications	WB IHC IF
Species Reactivity	Hu Ms
Immunogen Type	Recombinant protein
Immunogen Description	Recombinant protein fragment contain a sequence corresponding to a region within amino acids 644 and 930 of Laminin beta-3
Target Name	Laminin beta-3
Accession No.	Swiss-Prot:Q13751Gene ID:3914
Uniprot	Q13751
GeneID	3914;
Concentration	0.7mg/ml
Formulation	Supplied in 0.1M Tris-buffered saline with 10% Glycerol (pH7.0). 0.01% Thimerosal was added as a preservative.
Storage	Store at -20°C for long term preservation (recommended). Store at 4°C for short term use.

Application Details

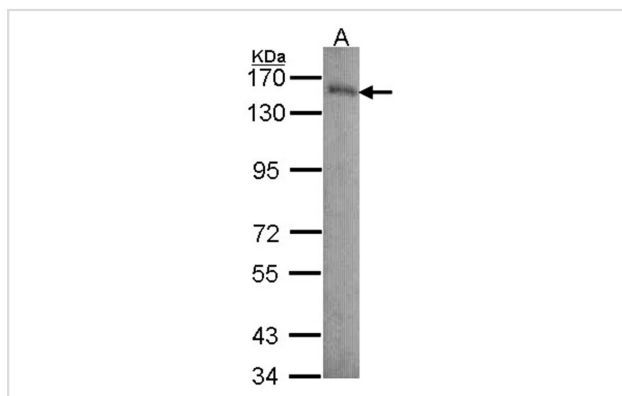
Predicted MW: 130kd

Western blotting: 1:500-1:3000

Immunohistochemistry: 1:100-1:250

Immunofluorescence: 1:100-1:200

Images

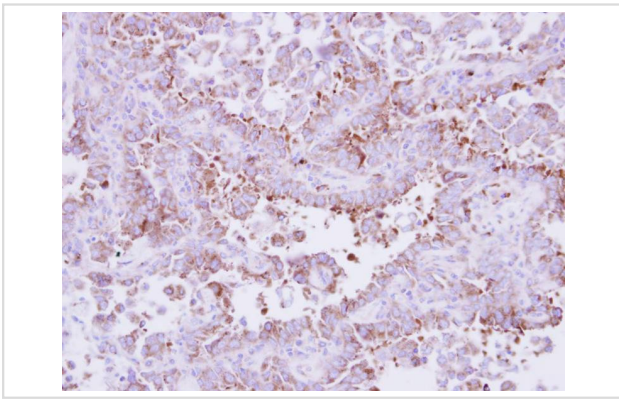


Sample (30 ug of whole cell lysate)

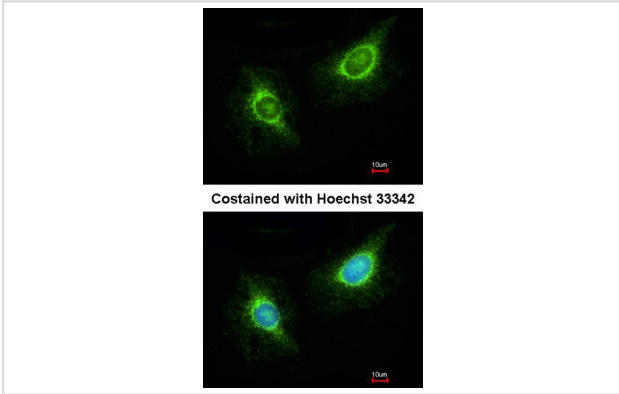
A: A431

7.5% SDS PAGE

Laminin beta-3 antibody diluted at 1: 1000



Immunohistochemical analysis of paraffin-embedded Lung ca, using Laminin beta 3 antibody at 1: 250 dilution.



Immunofluorescence analysis of methanol-fixed HeLa, using Laminin beta 3 antibody at 1: 200 dilution.

Background

The product encoded by this gene is a laminin that belongs to a family of basement membrane proteins. This protein is a beta subunit laminin, which together with an alpha and a gamma subunit, forms laminin-5. Mutations in this gene cause epidermolysis bullosa junctional Hertz type, and generalized atrophic benign epidermolysis bullosa, diseases that are characterized by blistering of the skin. Multiple alternatively spliced transcript variants that encode the same protein have been found for this gene. [provided by RefSeq]

Note: This product is for in vitro research use only