

## HES3 Antibody

Catalog No: #44740

Package Size: #44740-1 50ul #44740-2 100ul

Orders: order@signalwayantibody.com

Support: tech@signalwayantibody.com

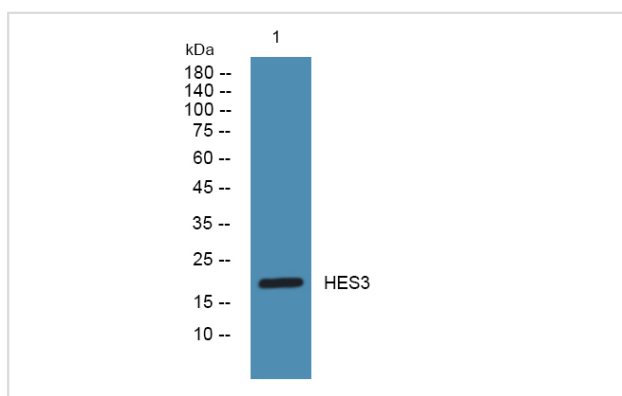
## Description

Product Name	HES3 Antibody
Host Species	Rabbit
Clonality	Polyclonal
Purification	Immunogen affinity purified
Applications	WB
Species Reactivity	Hu Ms Rt
Specificity	HES3antibody detects endogenous levels of total?HES3
Immunogen Type	Peptide
Immunogen Description	A synthesized peptide derived from human HES3
Target Name	HES3
Other Names	bHLHb43 antibody Class B basic helix loop helix protein 43 antibody Hairy and enhancer of split 3 antibody Transcription factor HES 3 antibody
Accession No.	Swiss-Prot#: Q5TGS1NCBI Gene ID:390992
Uniprot	Q5TGS1
GeneID	390992;
Calculated MW	20 kDa
Concentration	1.0mg/mL
Formulation	Rabbit IgG in phosphate buffered saline , pH 7.4, 150mM NaCl, 0.02% sodium azide and 50% glycerol.
Storage	Store at -20°C

## Application Details

Western blotting: □ 1:500-1:2000

## Images



Western blot analysis of lysates from U2OS cells, primary antibody was diluted at 1:1000, 4° over night

---

Note: This product is for in vitro research use only