

## ZFPM1 Antibody

Catalog No: #44752

Package Size: #44752-1 50ul #44752-2 100ul

Orders: [order@signalwayantibody.com](mailto:order@signalwayantibody.com)Support: [tech@signalwayantibody.com](mailto:tech@signalwayantibody.com)

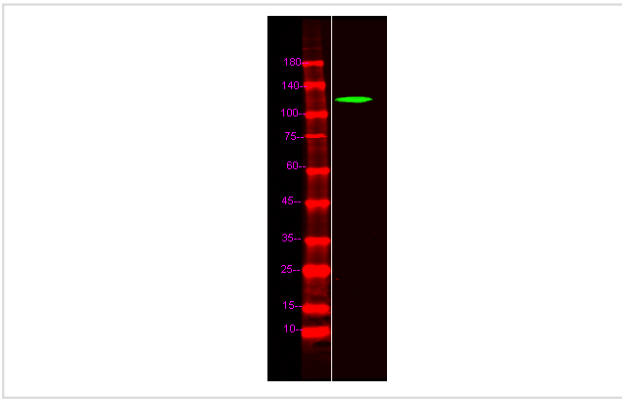
## Description

Product Name	ZFPM1 Antibody
Host Species	Rabbit
Clonality	Polyclonal
Purification	Immunogen affinity purified
Applications	WB
Species Reactivity	Hu Ms
Specificity	ZFPM1 antibody detects endogenous levels of total ZFPM1
Immunogen Type	Peptide
Immunogen Description	A synthesized peptide derived from human ZFPM1
Target Name	ZFPM1
Other Names	FOG-1 antibody FOG1_HUMAN antibody Friend of GATA 1 antibody Friend of GATA protein 1 antibody Friend of GATA1 antibody ZFPM1 antibody Zinc finger protein antibody Zinc finger protein 89A antibody Zinc finger protein multitype 1 antibody Zinc finger protein ZFPM1 antibody
Accession No.	Swiss-Prot#: Q8IX07 NCBI Gene ID:161882
Uniprot	Q8IX07
GeneID	161882;
Calculated MW	104 kDa
Concentration	1.0mg/mL
Formulation	Liquid in PBS containing 50% glycerol, and 0.02% sodium azide.
Storage	Store at -20°C

## Application Details

Western blotting: □ 1:500-1:2000

## Images



Western Blot analysis of HeLa lysates, using primary antibody at 1:1000 dilution.

---

Note: This product is for in vitro research use only