

Lamin B1 antibody

Catalog No: #23038

Orders: order@signalwayantibody.com

Support: tech@signalwayantibody.com

Description

Product Name	Lamin B1 antibody
Host Species	Rabbit
Clonality	Polyclonal
Purification	Purified by antigen-affinity chromatography.
Applications	WB IHC
Species Reactivity	Hu
Immunogen Type	Recombinant protein
Immunogen Description	Recombinant protein fragment contain a sequence corresponding to a region within amino acids 289 and 544 of Human LMNB1
Target Name	Lamin B1
Accession No.	Swiss-Prot:P20700Gene ID:4001
Uniprot	P20700
GeneID	4001;
Concentration	1mg/ml
Formulation	Supplied in 0.1M Tris-buffered saline with 10% Glycerol (pH7.0). 0.01% Thimerosal was added as a preservative.
Storage	Store at -20°C for long term preservation (recommended). Store at 4°C for short term use.

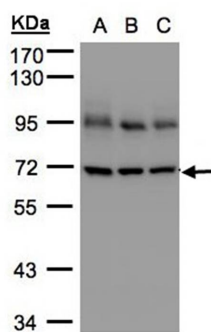
Application Details

Predicted MW: 66kd

Western blotting: 1:500-1:3000

Immunohistochemistry: 1:100-1:250

Images



Sample(30 ug whole cell lysate)

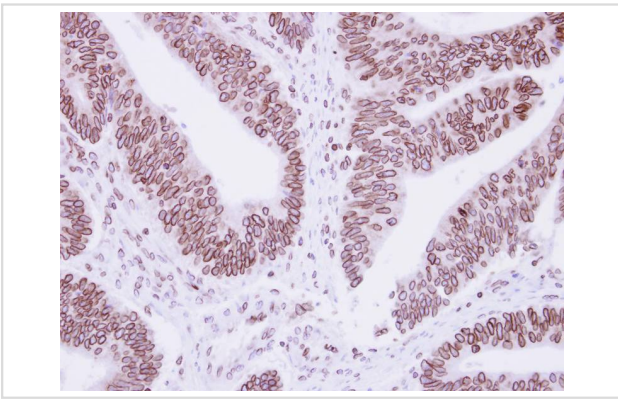
A: A431

B: H1299

C: HeLa S3

7.5% SDS PAGE

Primary antibody diluted at 1: 5000



Immunohistochemical analysis of paraffin-embedded Colon ca, using Lamin B1 antibody antibody at 1: 250 dilution.

Background

The nuclear lamina consists of a two-dimensional matrix of proteins located next to the inner nuclear membrane. The lamin family of proteins make up the matrix and are highly conserved in evolution. During mitosis, the lamina matrix is reversibly disassembled as the lamin proteins are phosphorylated. Lamin proteins are thought to be involved in nuclear stability, chromatin structure and gene expression. Vertebrate lamins consist of two types, A and B. This gene encodes one of the two B type proteins, B1. [provided by RefSeq]

Note: This product is for in vitro research use only