

## CITED4 Antibody

Catalog No: #44767

Package Size: #44767-1 50ul #44767-2 100ul

Orders: [order@signalwayantibody.com](mailto:order@signalwayantibody.com)Support: [tech@signalwayantibody.com](mailto:tech@signalwayantibody.com)

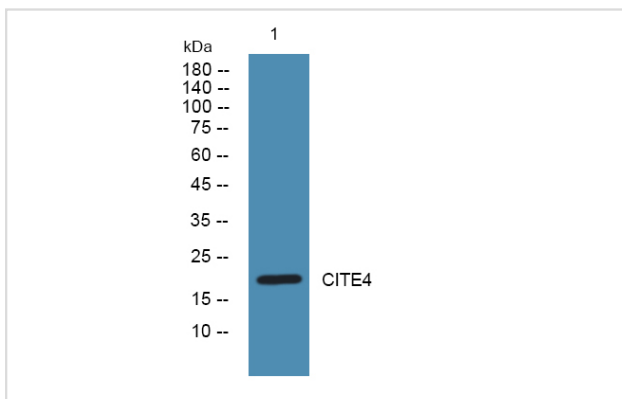
## Description

Product Name	CITED4 Antibody
Host Species	Rabbit
Clonality	Polyclonal
Purification	Immunogen affinity purified
Applications	WB
Species Reactivity	Hu Ms Rt
Specificity	CITED4antibody detects endogenous levels of total?CITED4
Immunogen Type	Peptide
Immunogen Description	A synthesized peptide derived from human CITED4
Target Name	CITED4
Other Names	AU019445 antibody AW742964 antibody Cbp/p300 interacting transactivator 4 antibody cbp/p300 interacting transactivator, with glu/asp rich carboxy terminal domain, 4 antibody Cbp/p300-interacting transactivator 4 antibody CITE4_HUMAN antibody Cited4 antibody MRG 2 antibody MRG-2 antibody Mrg2 antibod
Accession No.	Swiss-Prot#: Q96RK1NCBI Gene ID:163732
Uniprot	Q96RK1
GeneID	163732;
Calculated MW	32 kDa
Concentration	1.0mg/mL
Formulation	Rabbit IgG in phosphate buffered saline , pH 7.4, 150mM NaCl, 0.02% sodium azide and 50% glycerol.
Storage	Store at -20°C

## Application Details

Western blotting: □ 1:500-1:2000

## Images



Western blot analysis of lysates from DU145 cells, primary antibody was diluted at 1:1000, 4° over night

---

Note: This product is for in vitro research use only