

## MAD2 antibody

Catalog No: #23039

Orders: order@signalwayantibody.com

Support: tech@signalwayantibody.com

## Description

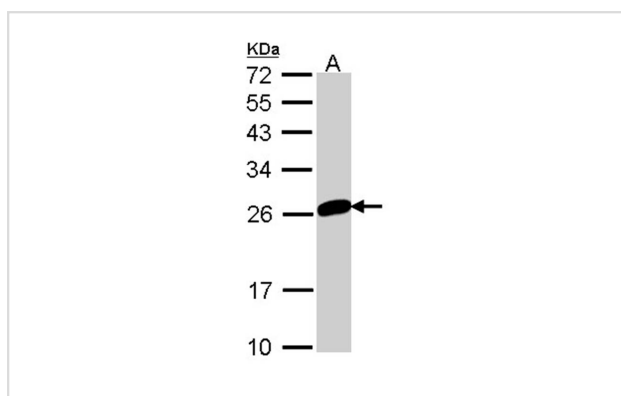
Product Name	MAD2 antibody
Host Species	Rabbit
Clonality	Polyclonal
Purification	Purified by antigen-affinity chromatography.
Applications	WB
Species Reactivity	Hu
Immunogen Type	Recombinant protein
Immunogen Description	Recombinant protein fragment contain a sequence corresponding to a region within amino acids 1 and 174 of Human MAD2L1
Target Name	MAD2
Accession No.	Swiss-Prot:Q13257Gene ID:4085
Uniprot	Q13257
GeneID	4085;
Concentration	1mg/ml
Formulation	Supplied in 0.1M Tris-buffered saline with 20% Glycerol (pH7.0). 0.01% Thimerosal was added as a preservative.
Storage	Store at -20°C for long term preservation (recommended). Store at 4°C for short term use.

## Application Details

Predicted MW: 24kd

Western blotting: 1:500-1:3000

## Images



Sample (30 ug of whole cell lysate)

A: 293T

12% SDS PAGE

Primary antibody diluted at 1: 1000

## Background

MAD2L1 is a component of the mitotic spindle assembly checkpoint that prevents the onset of anaphase until all chromosomes are properly aligned at the metaphase plate. MAD2L1 is related to the MAD2L2 gene located on chromosome 1. A MAD2 pseudogene has been mapped to chromosome 14.

[provided by RefSeq]

---

Note: This product is for in vitro research use only