

MAD2 antibody

Catalog No: #23040

Orders: order@signalwayantibody.com

Support: tech@signalwayantibody.com

Description

Product Name	MAD2 antibody
Host Species	Rabbit
Clonality	Polyclonal
Purification	Purified by antigen-affinity chromatography.
Applications	WB IHC IF
Species Reactivity	Hu
Immunogen Type	Peptide
Immunogen Description	Synthetic peptide contain a sequence corresponding to a region within amino acids 142 and 205 of Human MAD2L1
Target Name	MAD2
Accession No.	Swiss-Prot:Q13257Gene ID:4085
Uniprot	Q13257
GeneID	4085;
Concentration	1mg/ml
Formulation	Supplied in 0.1M Tris-buffered saline with 10% Glycerol (pH7.0). 0.01% Thimerosal was added as a preservative.
Storage	Store at -20°C for long term preservation (recommended). Store at 4°C for short term use.

Application Details

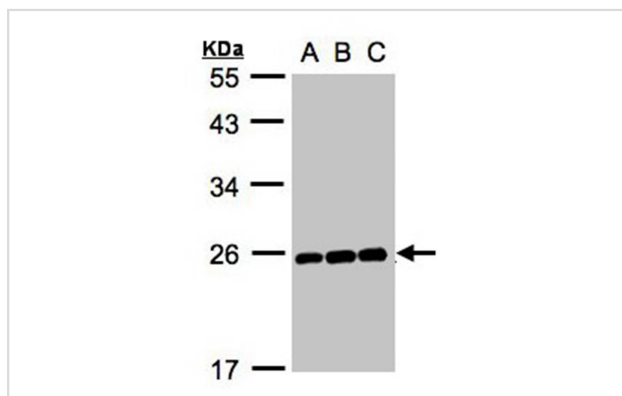
Predicted MW: 24kd

Western blotting: 1:500-1:3000

Immunohistochemistry: 1:50-1:500

Immunofluorescence: 1:100-1:200

Images



Sample (30ug whole cell lysate)

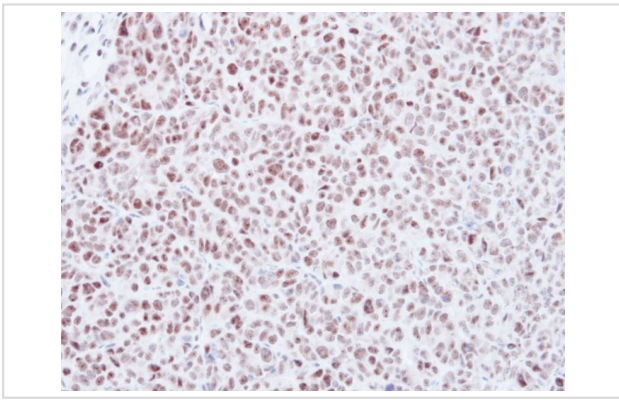
A: Hep G2

B: MOLT4

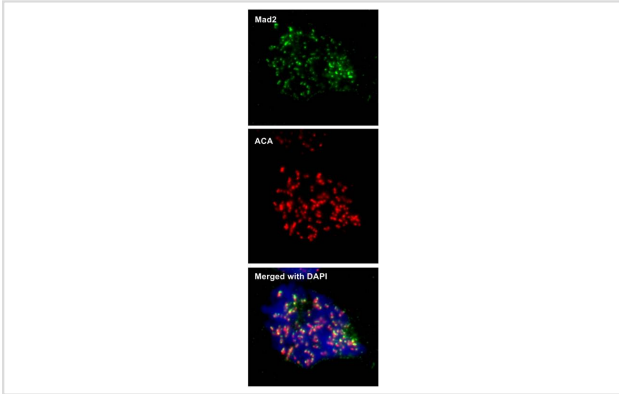
C: Raji

12% SDS PAGE

Primary antibody diluted at 1: 1000



Immunohistochemical analysis of paraffin-embedded DLD-1 xenograft, using Mad2L1 antibody at 1: 500 dilution.



Immunofluorescence analysis of human osteosarcoma cell line U2OS, using MAD2L1 antibody at 1: 1000 dilution.

Background

MAD2L1 is a component of the mitotic spindle assembly checkpoint that prevents the onset of anaphase until all chromosomes are properly aligned at the metaphase plate. MAD2L1 is related to the MAD2L2 gene located on chromosome 1. A MAD2 pseudogene has been mapped to chromosome 14. [provided by RefSeq]

Note: This product is for in vitro research use only