

p-Tau antibody

Catalog No: #23041

Orders: order@signalwayantibody.com

Support: tech@signalwayantibody.com

Description

Product Name	p-Tau antibody
Host Species	Rabbit
Clonality	Polyclonal
Purification	Purified by antigen-affinity chromatography.
Applications	WB IHC IF
Species Reactivity	Hu
Immunogen Type	Peptide
Immunogen Description	Synthetic peptide contain a sequence corresponding to a region within amino acids 171 and 236 of Human MAPT
Target Name	p-Tau
Accession No.	Swiss-Prot:P10636Gene ID:4137
Uniprot	P10636
GeneID	4137;
Concentration	1mg/ml
Formulation	Supplied in 0.1M Tris-buffered saline with 20% Glycerol (pH7.0). 0.01% Thimerosal was added as a preservative.
Storage	Store at -20°C for long term preservation (recommended). Store at 4°C for short term use.

Application Details

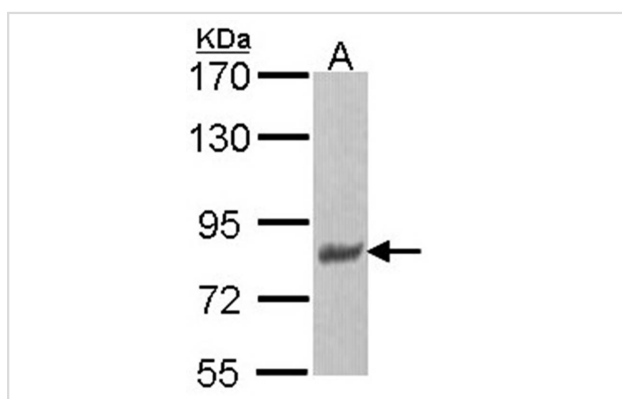
Predicted MW: 79kd

Western blotting: 1:500-1:3000

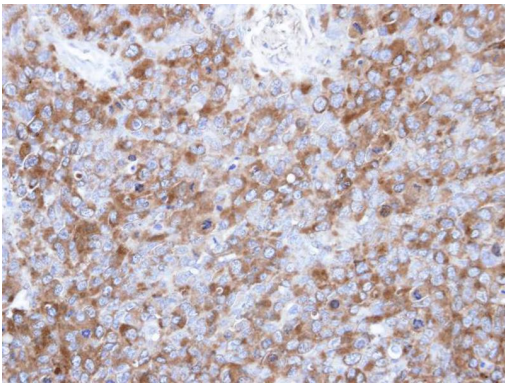
Immunohistochemistry: 1:100-1:500

Immunofluorescence: 1:100-1:200

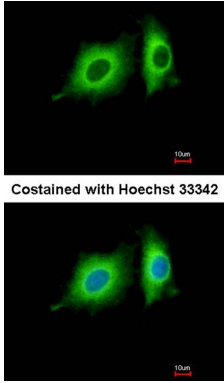
Images



Sample (30 ug of whole cell lysate)
 A: A431
 7.5% SDS PAGE
 Primary antibody diluted at 1: 1000



Immunohistochemical analysis of paraffin-embedded H1299 xenograft, using Tau antibody at 1: 500 dilution.



Immunofluorescence analysis of methanol-fixed A549, using Tau antibody at 1: 500 dilution.

Background

This gene encodes the microtubule-associated protein tau (MAPT) whose transcript undergoes complex, regulated alternative splicing, giving rise to several mRNA species. MAPT transcripts are differentially expressed in the nervous system, depending on stage of neuronal maturation and neuron type. MAPT gene mutations have been associated with several neurodegenerative disorders such as Alzheimer's disease, Pick's disease, frontotemporal dementia, cortico-basal degeneration and progressive supranuclear palsy. [provided by RefSeq]

Note: This product is for in vitro research use only