

## GRIP1 Antibody

Catalog No: #44803

Package Size: #44803-1 50ul #44803-2 100ul

Orders: [order@signalwayantibody.com](mailto:order@signalwayantibody.com)Support: [tech@signalwayantibody.com](mailto:tech@signalwayantibody.com)

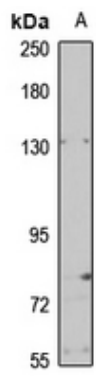
## Description

Product Name	GRIP1 Antibody
Host Species	Rabbit
Clonality	Polyclonal
Purification	Immunogen affinity purified
Applications	WB
Species Reactivity	Hu Ms Rt
Specificity	GRIP1 antibody detects endogenous levels of total GRIP1
Immunogen Type	Peptide
Immunogen Description	A synthesized peptide derived from human GRIP1
Target Name	GRIP1
Other Names	as GRIP antibody Glutamate receptor-interacting protein 1 antibody GRIP-1 antibody Grip1 antibody GRIP1_HUMAN antibody
Accession No.	Swiss-Prot#: Q9Y3R0 NCBI Gene ID:23426
Uniprot	Q9Y3R0
GeneID	23426;
Calculated MW	117 kDa
Concentration	1.0mg/mL
Formulation	Liquid in 0.42% Potassium phosphate, 0.87% Sodium chloride, pH 7.3, 30% glycerol, and 0.01% sodium azide.
Storage	Store at -20°C

## Application Details

WB (1/500 - 1/2000)

## Images



Western blot analysis of GRIP1 expression in HEK293T (A) whole cell lysates.

---

Note: This product is for in vitro research use only