

PHLP antibody

Catalog No: #23047



Orders: [order@signalwayantibody.com](mailto:order@signalwayantibody.com)  
Support: [tech@signalwayantibody.com](mailto:tech@signalwayantibody.com)

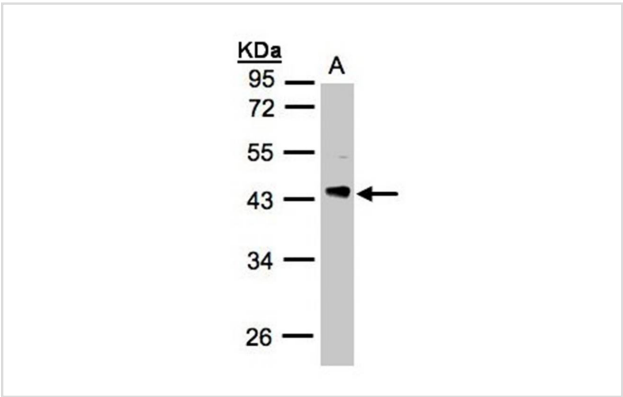
Description

Product Name	PHLP antibody
Host Species	Rabbit
Clonality	Polyclonal
Purification	Purified by antigen-affinity chromatography.
Applications	WB IF
Species Reactivity	Hu
Immunogen Type	Recombinant protein
Immunogen Description	Recombinant protein fragment contain a sequence corresponding to a region within amino acids 1 and 214 of PHLP
Target Name	PHLP
Accession No.	Swiss-Prot:Q13371Gene ID:5082
Uniprot	Q13371
GeneID	5082;
Concentration	1mg/ml
Formulation	Supplied in 0.1M Tris-buffered saline with 10% Glycerol (pH7.0). 0.01% Thimerosal was added as a preservative.
Storage	Store at -20°C for long term preservation (recommended). Store at 4°C for short term use.

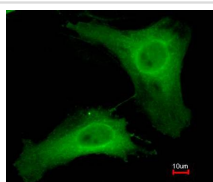
Application Details

Predicted MW: 34kd
Western blotting: 1:500-1:3000
Immunofluorescence: 1:100-1:200

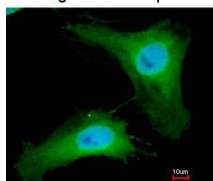
Images



Sample(30 ug whole cell lysate)  
A: H1299  
10% SDS PAGE  
Primary antibody diluted at 1: 3000



Merged with DNA probe



Immunofluorescence analysis of paraformaldehyde-fixed HeLa, using PHLP antibody at 1: 200 dilution.

## Background

Phosducin-like protein is a putative modulator of heterotrimeric G proteins. The protein shares extensive amino acid sequence homology with phosducin, a phosphoprotein expressed in retina and pineal gland. Both phosducin-like protein and phosphoducin have been shown to regulate G-protein signaling by binding to the beta-gamma subunits of G proteins. [provided by RefSeq]

Note: This product is for in vitro research use only