

NFE2 Antibody

Catalog No: #44859

Package Size: #44859-1 50ul #44859-2 100ul

Orders: order@signalwayantibody.comSupport: tech@signalwayantibody.com

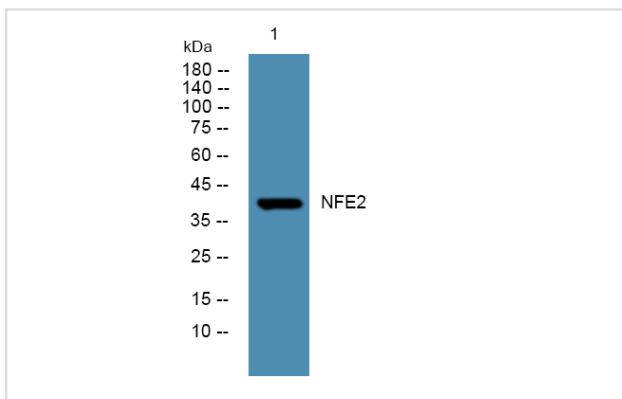
Description

Product Name	NFE2 Antibody
Host Species	Rabbit
Clonality	Polyclonal
Purification	Immunogen affinity purified
Applications	WB
Species Reactivity	Hu Ms Rt
Specificity	NFE2antibody detects endogenous levels of total?NFE2
Immunogen Type	Peptide
Immunogen Description	A synthesized peptide derived from human NFE2
Target Name	NFE2
Other Names	erythroid-derived 2 45 kDa subunit antibody Leucine zipper protein NF-E2 antibody Leucine zipper protein NFE2 antibody NF E2 antibody nfe2 antibody NFE2_HUMAN antibody Nuclear factor (erythroid derived 2), 45kDa antibody nuclear factor (erythroid-derived 2), 45kD antibody Nuclear factor antibody nuc
Accession No.	Swiss-Prot#: Q16621NCBI Gene ID:4778
Uniprot	Q16621
GeneID	4778;
Calculated MW	41 kDa
Concentration	1.0mg/mL
Formulation	Liquid in PBS containing 50% glycerol, and 0.02% sodium azide.
Storage	Store at -20°C

Application Details

Western blotting: □ 1:500-1:2000

Images



Western blot analysis of lysates from U2OS cells, primary antibody was diluted at 1:1000, 4° over night

Note: This product is for in vitro research use only