

SLC35B2 Antibody

Catalog No: #44861

Package Size: #44861-1 50ul #44861-2 100ul

Orders: order@signalwayantibody.com

Support: tech@signalwayantibody.com

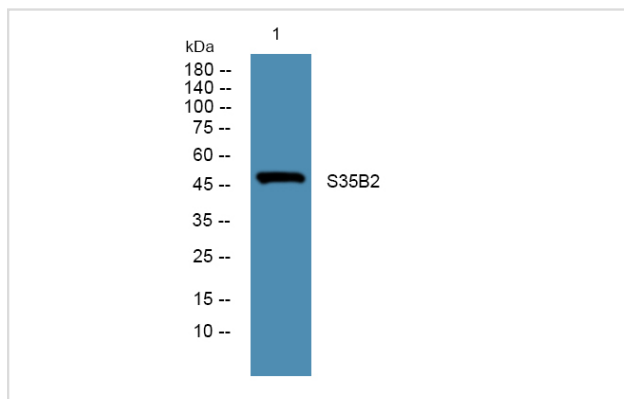
Description

Product Name	SLC35B2 Antibody
Host Species	Rabbit
Clonality	Polyclonal
Purification	Immunogen affinity purified
Applications	WB
Species Reactivity	Hu Ms
Specificity	SLC35B2 antibody detects endogenous levels of total SLC35B2
Immunogen Type	Peptide
Immunogen Description	A synthesized peptide derived from human SLC35B2
Target Name	SLC35B2
Other Names	Adenosine 3'-phospho 5'-phosphosulfate transporter 1 antibody PAPS transporter 1 antibody PAPST1 antibody PSEC0149 antibody Putative MAPK-activating protein PM15 antibody Putative NF-kappa-B-activating protein 48 antibody SLC35B2 antibody SLL antibody Solute carrier family 35, member B2 antibody UGT
Accession No.	Swiss-Prot#: Q8TB61 NCBI Gene ID:347734
Uniprot	Q8TB61
GeneID	347734;
Calculated MW	48 kDa
Concentration	1.0mg/mL
Formulation	Rabbit IgG in phosphate buffered saline , pH 7.4, 150mM NaCl, 0.02% sodium azide and 50% glycerol.
Storage	Store at -20°C

Application Details

Western blotting: □ 1:500-1:2000

Images



Western blot analysis of lysates from DU145 cells, primary antibody was diluted at 1:1000, 4° over night

Note: This product is for in vitro research use only