

PP1 gamma antibody

Catalog No: #23054

Orders: order@signalwayantibody.comSupport: tech@signalwayantibody.com

Description

Product Name	PP1 gamma antibody
Host Species	Rabbit
Clonality	Polyclonal
Purification	Purified by antigen-affinity chromatography.
Applications	WB IHC IF
Species Reactivity	Hu
Immunogen Type	Recombinant protein
Immunogen Description	Recombinant protein fragment contain a sequence corresponding to a region within amino acids 2 and 197 of PP1 gamma
Target Name	PP1 gamma
Accession No.	Swiss-Prot:P36873Gene ID:5501
Uniprot	P36873
GeneID	5501;
Concentration	1mg/ml
Formulation	Supplied in 0.1M Tris-buffered saline with 10% Glycerol (pH7.0). 0.01% Thimerosal was added as a preservative.
Storage	Store at -20°C for long term preservation (recommended). Store at 4°C for short term use.

Application Details

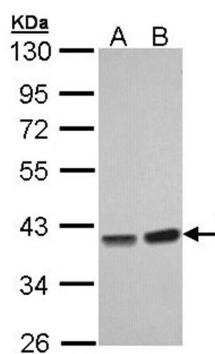
Predicted MW: 37kd

Western blotting: 1:500-1:3000

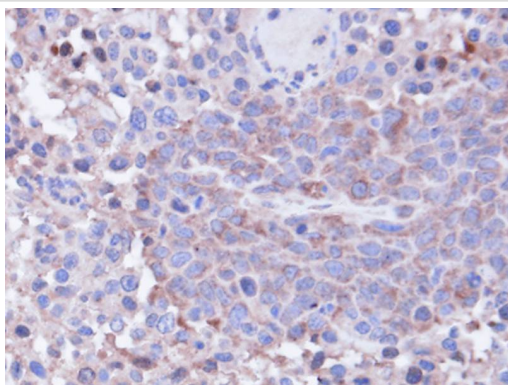
Immunohistochemistry: 1:100-1:250

Immunofluorescence: 1:100-1:200

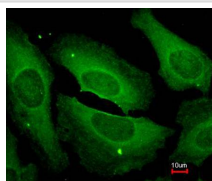
Images



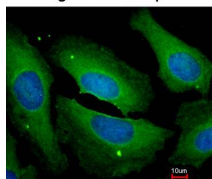
Sample (30 ug of whole cell lysate)
A: Hep G2
B: Molt-4
10% SDS PAGE
Primary antibody diluted at 1: 1000



Immunohistochemical analysis of paraffin-embedded SAS xenograft, using PPP1CC antibody at 1: 100 dilution.



Merged with DNA probe



Immunofluorescence analysis of paraformaldehyde-fixed HeLa, using PP1 gamma antibody at 1: 200 dilution.

Note: This product is for in vitro research use only