

## GPR30 Antibody

Catalog No: #44921

Orders: [order@signalwayantibody.com](mailto:order@signalwayantibody.com)Support: [tech@signalwayantibody.com](mailto:tech@signalwayantibody.com)

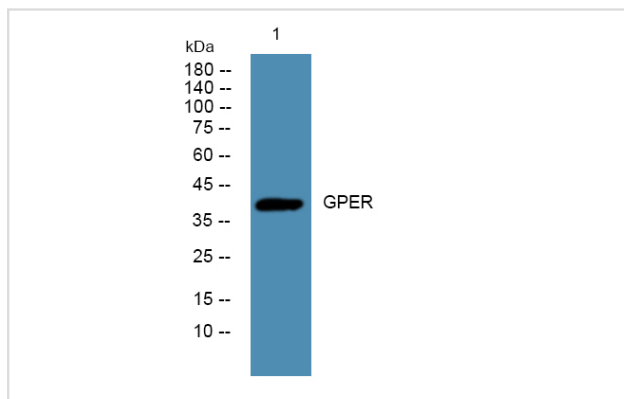
## Description

Product Name	GPR30 Antibody
Host Species	Rabbit
Clonality	Polyclonal
Purification	Immunogen affinity purified
Applications	WB
Species Reactivity	Hu Ms Rt
Specificity	GPR30antibody detects endogenous levels of total?GPR30
Immunogen Type	Peptide
Immunogen Description	A synthesized peptide derived from human GPR30
Target Name	GPR30
Other Names	<p>CEPR antibody</p> <p>Chemoattractant receptor-like 2 antibody</p> <p>Chemokine receptor-like 2 antibody</p> <p>CMKRL2 antibody</p> <p>Constitutively expressed peptide like receptor antibody</p> <p>DRY12 antibody</p> <p>FEG 1 antibody</p> <p>FEG-1 antibody</p> <p>Flow-induced endothelial G protein-coupled receptor anti</p>
Accession No.	Swiss-Prot#: Q99527NCBI Gene ID:2852
Uniprot	Q99527
GeneID	2852;
Calculated MW	42 kDa
Concentration	1.0mg/mL
Formulation	Liquid in PBS containing 50% glycerol, and 0.02% sodium azide.
Storage	Store at -20°C

## Application Details

Western blotting: □ 1:500-1:2000

## Images



Western blot analysis of lysates from KB cells, primary antibody was diluted at 1:1000, 4° over night

Note: This product is for in vitro research use only