

## GPR4 Antibody

Catalog No: #44927

Package Size: #44927-1 50ul #44927-2 100ul

Orders: [order@signalwayantibody.com](mailto:order@signalwayantibody.com)Support: [tech@signalwayantibody.com](mailto:tech@signalwayantibody.com)

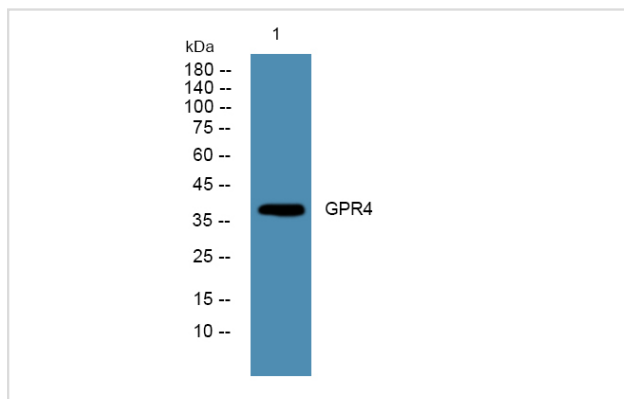
## Description

Product Name	GPR4 Antibody
Host Species	Rabbit
Clonality	Polyclonal
Purification	Immunogen affinity purified
Applications	WB
Species Reactivity	Hu Ms Rt
Specificity	GPR4antibody detects endogenous levels of total?GPR4
Immunogen Type	Peptide
Immunogen Description	A synthesized peptide derived from human GPR4
Target Name	GPR4
Other Names	G protein coupled receptor 19 antibody G protein coupled receptor 4 antibody G-protein coupled receptor 19 antibody  G-protein coupled receptor 4 antibody GPR 4 antibody GPR19 antibody GPR4 antibody GPR4_HUMAN antibody Probable G protein coupled receptor GPR4 anti
Accession No.	Swiss-Prot#: P46093NCBI Gene ID:2828
Uniprot	P46093
GeneID	2828;
Calculated MW	41 kDa
Concentration	1.0mg/mL
Formulation	Liquid in PBS containing 50% glycerol, and 0.02% sodium azide.
Storage	Store at -20°C

## Application Details

Western blotting: □ 1:500-1:2000

## Images



Western blot analysis of lysates from A431 cells, primary antibody was diluted at 1:1000, 4° over night

Note: This product is for in vitro research use only