

## GPR48 Antibody

Catalog No: #44931

Orders: [order@signalwayantibody.com](mailto:order@signalwayantibody.com)Support: [tech@signalwayantibody.com](mailto:tech@signalwayantibody.com)

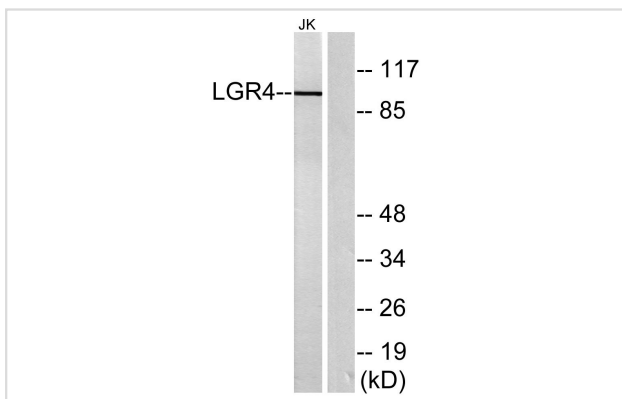
## Description

Product Name	GPR48 Antibody
Host Species	Rabbit
Clonality	Polyclonal
Purification	Immunogen affinity purified
Applications	WB
Species Reactivity	Hu Ms Rt
Specificity	GPR48antibody detects endogenous levels of total?GPR48
Immunogen Type	Peptide
Immunogen Description	A synthesized peptide derived from human GPR48
Target Name	GPR48
Other Names	BNMD17 antibody G protein coupled receptor 48 antibody G-protein coupled receptor 48 antibody  GPR48 antibody Leucine-rich repeat-containing G protein-coupled receptor 4 antibody Leucine-rich repeat-containing G-protein coupled receptor 4 antibody LGR4 antibody LGR4_H
Accession No.	Swiss-Prot#: Q9BXB1NCBI Gene ID:55366
Uniprot	Q9BXB1
GeneID	55366;
Calculated MW	104 kDa
Concentration	1.0mg/mL
Formulation	Rabbit IgG in phosphate buffered saline , pH 7.4, 150mM NaCl, 0.02% sodium azide and 50% glycerol.
Storage	Store at -20°C

## Application Details

Western blotting: □ 1:500-1:2000

## Images



Western blot analysis of lysates from Jurkat cells, using LGR4 Antibody. The lane on the right is blocked with the synthesized peptide.

---

Note: This product is for in vitro research use only