

## PRPP synthetase-associated protein 1 antibody

Catalog No: #23058

Orders: order@signalwayantibody.com

Support: tech@signalwayantibody.com

## Description

Product Name	PRPP synthetase-associated protein 1 antibody
Host Species	Rabbit
Clonality	Polyclonal
Purification	Purified by antigen-affinity chromatography.
Applications	WB IHC
Species Reactivity	Hu
Immunogen Type	Recombinant protein
Immunogen Description	Recombinant protein fragment contain a sequence corresponding to a region within amino acids 1 and 338 of Human PRPSAP1
Target Name	PRPP synthetase-associated protein 1
Accession No.	Swiss-Prot:Q14558Gene ID:5635
Uniprot	Q14558
GeneID	5635;
Concentration	0.5mg/ml
Formulation	Supplied in 0.1M Tris-buffered saline with 10% Glycerol (pH7.0). 0.01% Thimerosal was added as a preservative.
Storage	Store at -20°C for long term preservation (recommended). Store at 4°C for short term use.

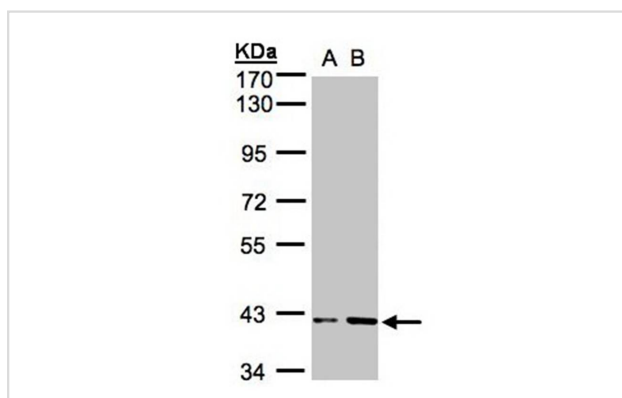
## Application Details

Predicted MW: 39kd

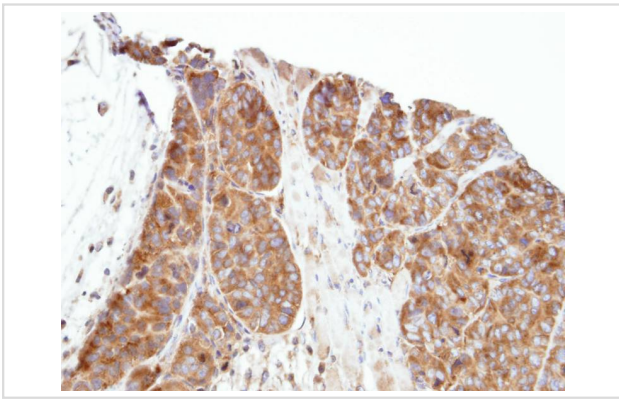
Western blotting: 1:500-1:3000

Immunohistochemistry: 1:50-1:500

## Images



Sample (30ug whole cell lysate)  
A: HeLa S3  
B: Hep G2  
10% SDS PAGE  
Primary antibody diluted at 1: 1000



Immunohistochemical analysis of paraffin-embedded SW480 xenograft, using PRPSAP1 antibody at 1: 500 dilution.

---

Note: This product is for in vitro research use only