

LGR5 Antibody

Catalog No: #44974

Package Size: #44974-1 50ul #44974-2 100ul

Orders: order@signalwayantibody.com

Support: tech@signalwayantibody.com

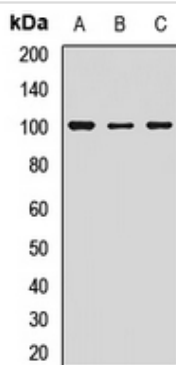
Description

Product Name	LGR5 Antibody
Host Species	Rabbit
Clonality	Polyclonal
Purification	Immunogen affinity purified
Applications	WB, IH, IF/IC
Species Reactivity	Hu Ms Rat
Specificity	LGR5antibody detects endogenous levels of total?LGR5
Immunogen Type	Peptide
Immunogen Description	A synthesized peptide derived from human LGR5
Target Name	LGR5
Other Names	FEX antibody G protein coupled receptor 49 antibody G protein coupled receptor 67 antibody g protein-coupled receptor fex antibody G-protein coupled receptor 49 antibody G-protein coupled receptor 67 antibody G-protein coupled receptor HG38 antibody GPR 49 antibody
Accession No.	Swiss-Prot#: O75473NCBI Gene ID:8549
Uniprot	O75473
GeneID	8549;
Calculated MW	100 kDa
Concentration	1.0mg/mL
Formulation	Liquid in 0.42% Potassium phosphate, 0.87% Sodium chloride, pH 7.3, 30% glycerol, and 0.01% sodium azide.
Storage	Store at -20°C

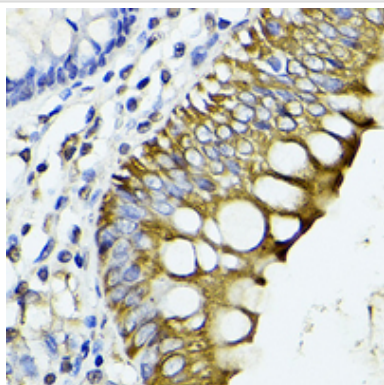
Application Details

Western blotting: □ 1:500-1:2000

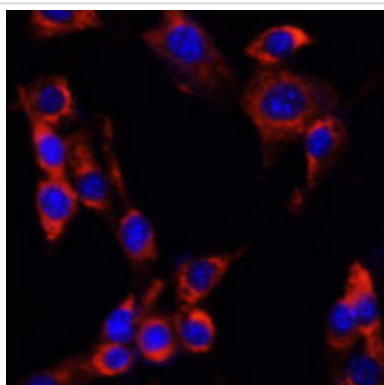
Images



Western blot analysis of GPR49 expression in A431 (A), mouse brain (B), rat skeletal muscle (C) whole cell lysates.



Immunohistochemical analysis of GPR49 staining in human colon cancer formalin fixed paraffin embedded tissue section. The section was pre-treated using heat mediated antigen retrieval with sodium citrate buffer (pH 6.0). The section was then incubated with the antibody at room temperature and detected using an HRP conjugated compact polymer system.



Immunofluorescent analysis of GPR49 staining in NIH3T3 cells. Formalin-fixed cells were permeabilized with 0.1% Triton X-100 in TBS for 5-10 minutes and blocked with 3% BSA-PBS for 30 minutes at room temperature. Cells were probed with the primary antibody in 3% BSA-PBS and incubated overnight at 4 °C in a humidified chamber. Cells were washed with PBST and incubated with a AF594-conjugated secondary antibody (red) in PBS at room temperature in the dark.

Note: This product is for in vitro research use only