

Collagen XVII Antibody

Catalog No: #45014

Package Size: #45014-1 50ul #45014-2 100ul

Orders: order@signalwayantibody.com

Support: tech@signalwayantibody.com

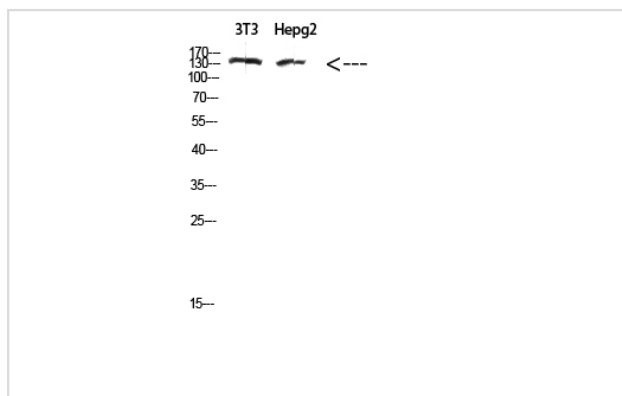
Description

| | |
|-----------------------|--|
| Product Name | Collagen XVII Antibody |
| Host Species | Rabbit |
| Clonality | Polyclonal |
| Purification | Immunogen affinity purified |
| Applications | WB |
| Species Reactivity | Hu Ms Rt |
| Specificity | Collagen XVII Antibody detects endogenous levels of total Collagen XVII |
| Immunogen Type | Peptide |
| Immunogen Description | A synthesized peptide derived from human Collagen XVII |
| Target Name | Collagen XVII |
| Other Names | COL17A1, Alpha 1 type XVII collagen, BA16H23.2, BP180, Bullous pemphigoid antigen 2, BPA-2, BPAG2, Collagen alpha-1(XVII) chain, Collagen, type XVII, alpha 1, Lad-1 |
| Accession No. | Swiss-Prot#: Q9UMD9NCBI Gene ID:1308 |
| Uniprot | Q9UMD9 |
| GeneID | 1308; |
| Calculated MW | 130,180kDa |
| Concentration | 1.0mg/mL |
| Formulation | Rabbit IgG in phosphate buffered saline , pH 7.4, 150mM NaCl, 0.02% sodium azide and 50% glycerol. |
| Storage | Store at -20°C |

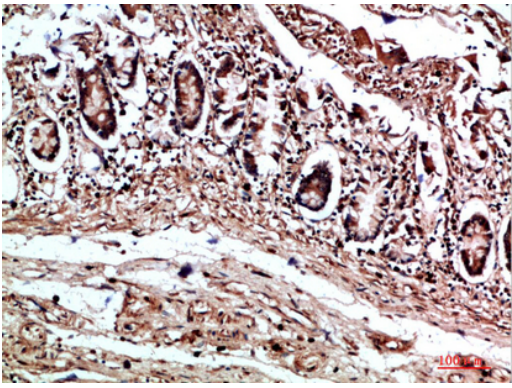
Application Details

Western blotting: 1:1000-3000

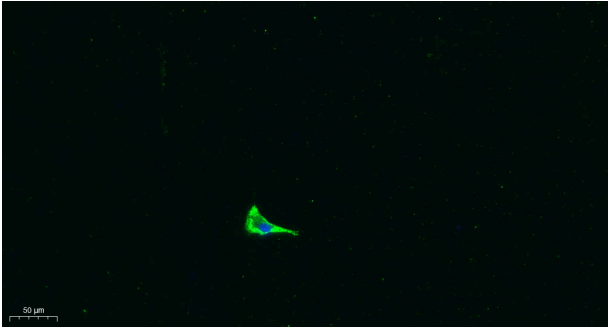
Images



Western Blot analysis of 3T3, hepg2 cells using Antibody diluted at 500. Secondary antibody was diluted at 1:20000



Immunohistochemical analysis of paraffin-embedded human-colon, antibody was diluted at 1:200



Immunofluorescence analysis of A549. 1,primary Antibody was diluted at 1:200(4°C overnight). 2, Goat Anti Rabbit IgG (H&L) - Alexa Fluor 488 Secondary antibody was diluted at 1:1000(room temperature, 50min).3, Picture B: DAPI(blue) 10min.

Note: This product is for in vitro research use only