

Lrp2 / Megalin Antibody

Catalog No: #45026

Package Size: #45026-1 50ul #45026-2 100ul

Orders: order@signalwayantibody.comSupport: tech@signalwayantibody.com

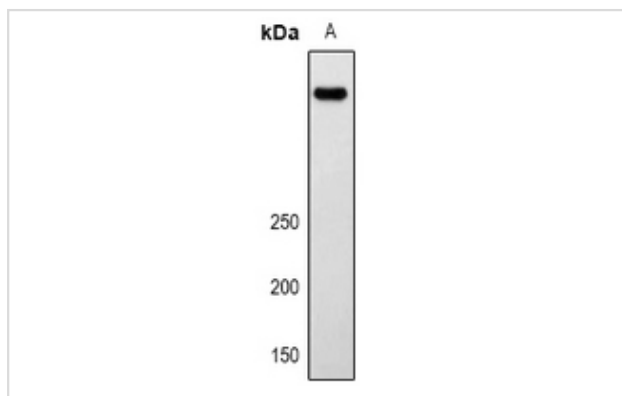
Description

Product Name	Lrp2 / Megalin Antibody
Host Species	Rabbit
Clonality	Polyclonal
Purification	Immunogen affinity purified
Applications	WB, IH
Species Reactivity	Hu Ms Rt
Specificity	Lrp2 / Megalin Antibody detects endogenous levels of total Lrp2 / Megalin
Immunogen Type	Peptide
Immunogen Description	A synthesized peptide derived from human Lrp2 / Megalin
Target Name	Lrp2 / Megalin
Other Names	LRP2, DBS, Glycoprotein 330, gp330, Megalin, LRP-2, Calcium sensor protein
Accession No.	Swiss-Prot#: P98164NCBI Gene ID:4036
Uniprot	P98164
GeneID	4036;
Calculated MW	522kDa
Concentration	1.0mg/mL
Formulation	Liquid in 0.42% Potassium phosphate, 0.87% Sodium chloride, pH 7.3, 30% glycerol, and 0.01% sodium azide.
Storage	Store at -20°C

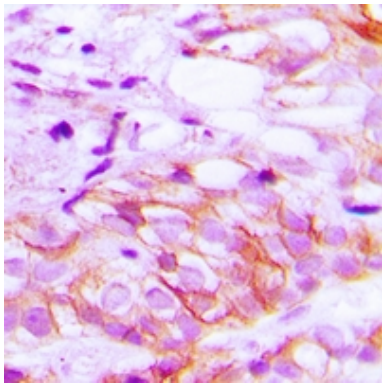
Application Details

WB (1/500 - 1/2000), IH (1/50 - 1/200)

Images



Western blot analysis of LRP2 expression in mouse lung (A) whole cell lysates.



Immunohistochemical analysis of LRP2 staining in human breast cancer formalin fixed paraffin embedded tissue section. The section was pre-treated using heat mediated antigen retrieval with sodium citrate buffer (pH 6.0). The section was then incubated with the antibody at room temperature and detected using an HRP conjugated compact polymer system. DAB was used as the chromogen. The section was then counterstained with haematoxylin and mounted with DPX.

Note: This product is for in vitro research use only