

SET antibody

Catalog No: #23071

Orders: order@signalwayantibody.com

Support: tech@signalwayantibody.com

Description

| | |
|-----------------------|--|
| Product Name | SET antibody |
| Host Species | Rabbit |
| Clonality | Polyclonal |
| Purification | Purified by antigen-affinity chromatography. |
| Applications | WB IHC IF |
| Species Reactivity | Hu |
| Immunogen Type | Peptide |
| Immunogen Description | Synthetic peptide contain a sequence corresponding to a region within amino acids 1 and 11 of SET |
| Target Name | SET |
| Accession No. | Swiss-Prot:Q01105Gene ID:6418 |
| Uniprot | Q01105 |
| GeneID | 6418; |
| Concentration | 1mg/ml |
| Formulation | Supplied in 0.1M Tris-buffered saline with 10% Glycerol (pH7.0). 0.01% Thimerosal was added as a preservative. |
| Storage | Store at -20°C for long term preservation (recommended). Store at 4°C for short term use. |

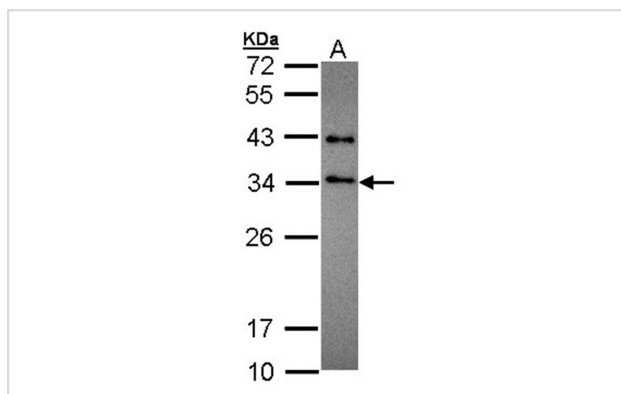
Application Details

Predicted MW: 32kd

Immunohistochemistry: 1:100-1:250

Immunofluorescence: 1:100-1:200

Images

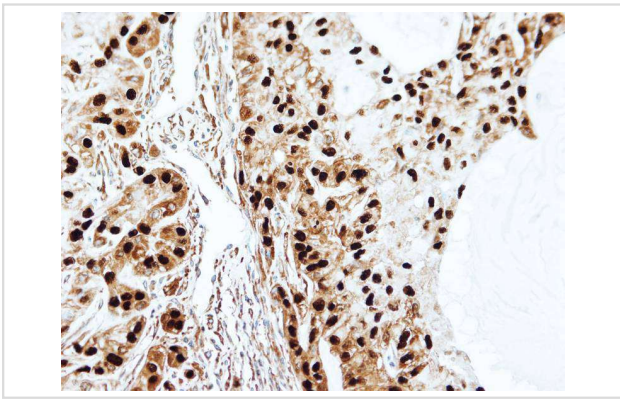


Sample (30 ug of whole cell lysate)

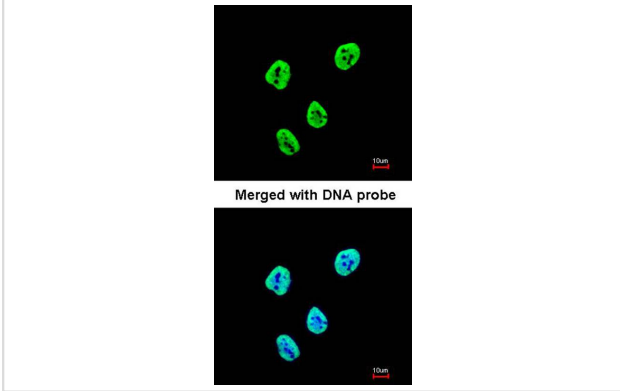
A: HeLa

12% SDS PAGE

Primary antibody diluted at 1: 1000



Immunohistochemical analysis of paraffin-embedded A549 xenograft, using SET antibody at 1: 100 dilution.



Immunofluorescence analysis of paraformaldehyde-fixed HeLa, using SET antibody at 1: 200 dilution.

Note: This product is for in vitro research use only