

## Spermidine Antibody

Catalog No: #45122

Package Size: #45122-1 50ul #45122-2 100ul

Orders: [order@signalwayantibody.com](mailto:order@signalwayantibody.com)Support: [tech@signalwayantibody.com](mailto:tech@signalwayantibody.com)

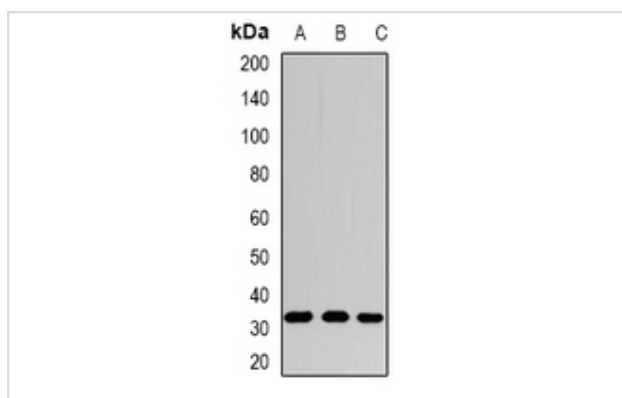
## Description

Product Name	Spermidine Antibody
Host Species	Rabbit
Clonality	Polyclonal
Purification	Immunogen affinity purified
Applications	WB
Species Reactivity	Hu Ms Rt
Specificity	Spermidine Antibody detects endogenous levels of total Spermidine
Immunogen Type	Peptide
Immunogen Description	A synthesized peptide derived from human Spermidine
Target Name	Spermidine
Other Names	SRM, Spermidine synthase-1, SPS1, PAPT, SPDSY, SRML1, Spermidine synthase
Accession No.	Swiss-Prot#: P19623NCBI Gene ID:6723
Uniprot	P19623
GeneID	6723;
Calculated MW	33 kDa
Concentration	1.0mg/mL
Formulation	Liquid in 0.42% Potassium phosphate, 0.87% Sodium chloride, pH 7.3, 30% glycerol, and 0.01% sodium azide.
Storage	Store at -20°C

## Application Details

WB (1/500 - 1/2000)

## Images



Western blot analysis of SPDSY expression in HepG2 (A), mouse stomach (B), rat liver (C) whole cell lysates.

---

Note: This product is for in vitro research use only