

SOD-3 Antibody

Catalog No: #45132

Package Size: #45132-1 50ul #45132-2 100ul

Orders: order@signalwayantibody.comSupport: tech@signalwayantibody.com

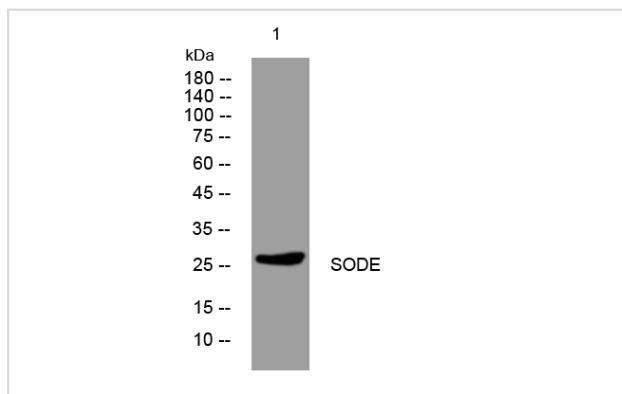
Description

Product Name	SOD-3 Antibody
Host Species	Rabbit
Clonality	Polyclonal
Purification	Immunogen affinity purified
Applications	WB
Species Reactivity	Hu Ms Rt
Specificity	SOD-3 Antibody detects endogenous levels of total SOD-3
Immunogen Type	Peptide
Immunogen Description	A synthesized peptide derived from human SOD-3
Target Name	SOD-3
Other Names	SOD3, EC-SOD
Accession No.	Swiss-Prot#: P08294NCBI Gene ID:6649
Uniprot	P08294
GeneID	6649;
Calculated MW	26 kDa
Concentration	1.0mg/mL
Formulation	Liquid in PBS containing 50% glycerol, 0.5% BSA and 0.02% sodium azide.
Storage	Store at -20°C

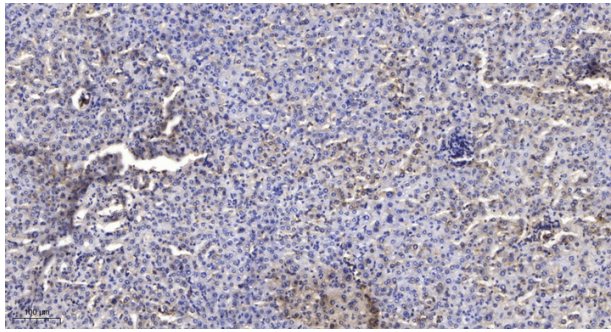
Application Details

Western blotting: 1:1000-3000

Images



Western blot analysis of lysates from HpeG2 cells, primary antibody was diluted at 1:1000, 4° over night



Immunohistochemical analysis of paraffin-embedded human liver cancer. 1, Antibody was diluted at 1:200(4° overnight). 2, Tris-EDTA,pH9.0 was used for antigen retrieval. 3,Secondary antibody was diluted at 1:200(room temperature, 45min).

Note: This product is for in vitro research use only