

## TSPO Antibody

Catalog No: #45244

Package Size: #45244-1 50ul #45244-2 100ul

Orders: [order@signalwayantibody.com](mailto:order@signalwayantibody.com)Support: [tech@signalwayantibody.com](mailto:tech@signalwayantibody.com)

## Description

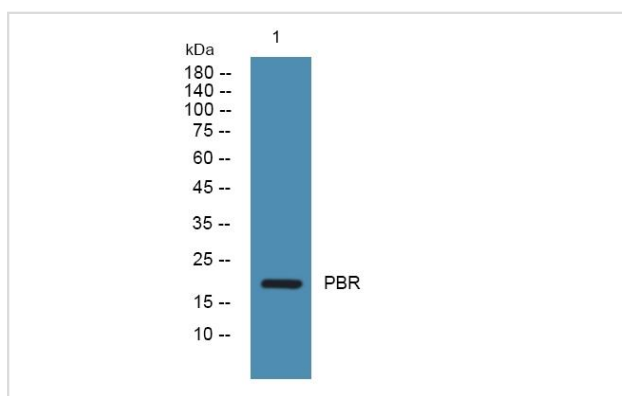
Product Name	TSPO Antibody
Host Species	Rabbit
Clonality	Polyclonal
Purification	The antibody was affinity-purified from rabbit antiserum by affinity-chromatography using epitope-specific immunogen.
Applications	WB IHC
Species Reactivity	Human Mouse Rat
Specificity	TSPO Antibody detects endogenous levels of total TSPO
Immunogen Type	Peptide
Immunogen Description	A synthesized peptide derived from human TSPO
Target Name	TSPO
Other Names	TSPO, BZRP, BPBS, IBP, MBR, MDRC, PBR, PBRS, PBS, PKBS, PTBR, Pk18, Translocator protein, Translocator protein (18kDa)
Accession No.	Swiss-Prot#: P30536NCBI Gene ID:706
Uniprot	P30536
GeneID	706;
Calculated MW	19 kDa
Concentration	1.0mg/mL
Formulation	Liquid in PBS containing 50% glycerol, 0.5% BSA and 0.02% sodium azide.
Storage	Store at -20°C

## Application Details

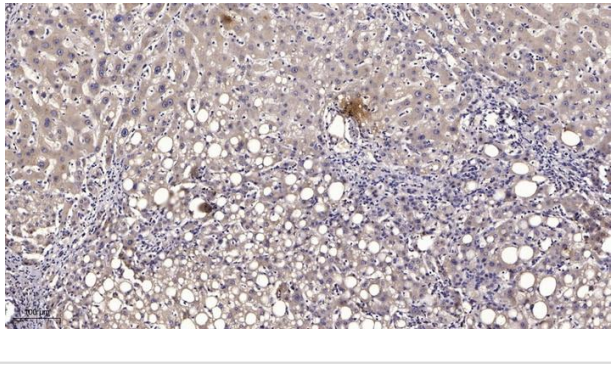
WB 1:500-2000

IHC 1:50-300

## Images



Western blot analysis of lysates from DU145 cells, primary antibody was diluted at 1:1000, 4° over night



Immunohistochemical analysis of paraffin-embedded human liver cancer. 1, Antibody was diluted at 1:200(4° overnight). 2, Tris-EDTA,pH9.0 was used for antigen retrieval. 3,Secondary antibody was diluted at 1:200(room temperature, 45min).

## Background

Present mainly in the mitochondrial compartment of peripheral tissues, the protein encoded by this gene interacts with some benzodiazepines and has different affinities than its endogenous counterpart. The protein is a key factor in the flow of cholesterol into mitochondria to permit the initiation of steroid hormone synthesis. Alternatively spliced transcript variants have been reported; one of the variants lacks an internal exon and is considered non-coding, and the other variants encode

Note: This product is for in vitro research use only