

## GBA Antibody

Catalog No: #45246

Package Size: #45246-1 50ul #45246-2 100ul

Orders: order@signalwayantibody.com

Support: tech@signalwayantibody.com

## Description

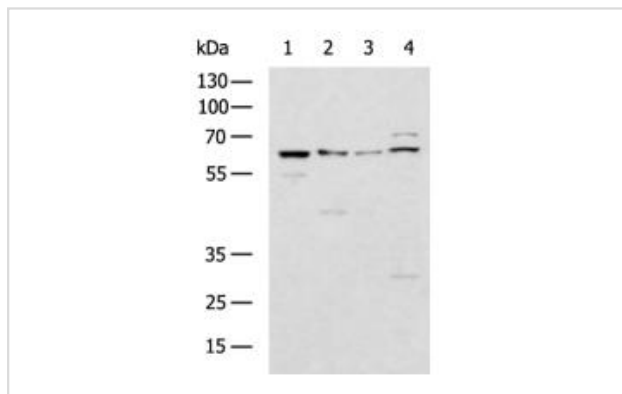
Product Name	GBA Antibody
Host Species	Rabbit
Clonality	Polyclonal
Purification	Immunogen affinity purified
Applications	WB;IHC
Species Reactivity	Hu Ms
Specificity	GBA Antibody detects endogenous levels of total GBA
Immunogen Type	Peptide
Immunogen Description	A synthesized peptide derived from human GBA
Target Name	GBA
Other Names	GBA, Acid beta-glucosidase, Alglucerase, Beta-glucocerebrosidase, GBA1, Glucosidase, beta, acid, GLUC, GCB, Lysosomal glucocerebrosidase, Metaxin, MTXN, Glucosylceramidase, Imiglucerase
Accession No.	Swiss-Prot#: P04062NCBI Gene ID:2629
Uniprot	P04062
GeneID	2629;
Calculated MW	60 kDa
Concentration	1.0 mg/ml
Formulation	pH7.4 PBS, 0.05% NaN <sub>3</sub> , 40% Glycerol
Storage	Store at -20°C

## Application Details

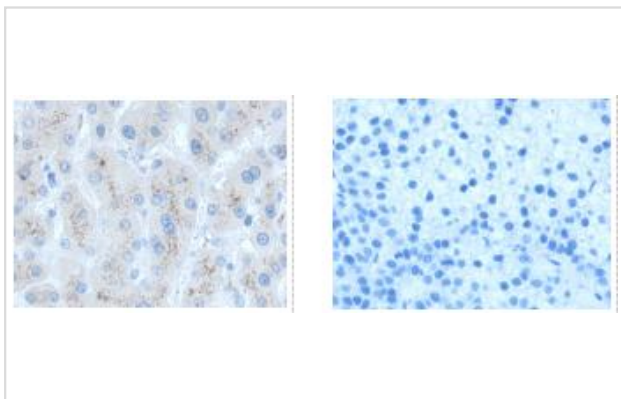
WB: 1:1000~1:5000

IHC: 1:50~1:200

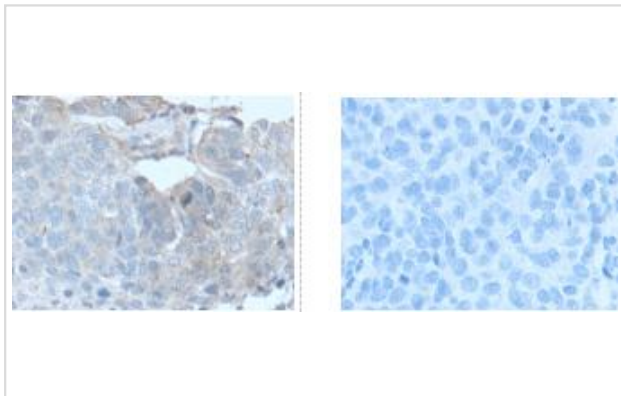
## Images



Gel: 8%SDS-PAGE Lysate: 40 ug Lane 1-4: Mouse liver tissue, 231, HeLa, LNCAP cell lysates  
 Primary antibody: at dilution 1/1100  
 Secondary antibody: at 1/5000 dilution  
 Exposure time: 30 seconds



The image on the left is immunohistochemistry of paraffin-embedded Human liver cancer tissue at dilution 1/50, on the right is treated with synthetic peptide. (Original magnification: 200)



The image on the left is immunohistochemistry of paraffin-embedded Human lung cancer tissue at dilution 1/50, on the right is treated with synthetic peptide. (Original magnification: 200)

---

Note: This product is for in vitro research use only