

## KIFAP3 Antibody

Catalog No: #45265

Package Size: #45265-1 50ul #45265-2 100ul

Orders: order@signalwayantibody.com

Support: tech@signalwayantibody.com

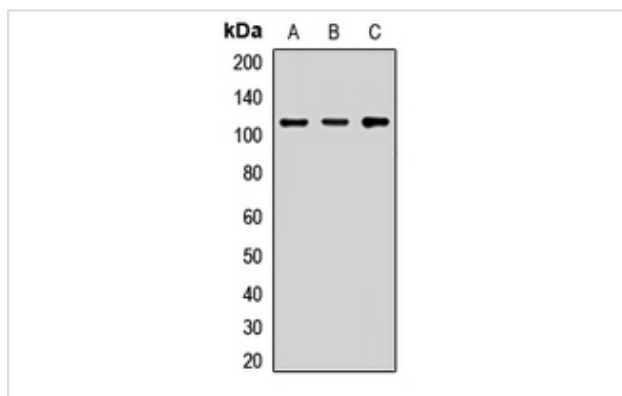
## Description

Product Name	KIFAP3 Antibody
Host Species	Rabbit
Clonality	Polyclonal
Purification	Immunogen affinity purified
Applications	WB, IF/IC
Species Reactivity	Hu Ms Rt
Specificity	KIFAP3 Antibody detects endogenous levels of total KIFAP3
Immunogen Type	Peptide
Immunogen Description	A synthesized peptide derived from human KIFAP3
Target Name	KIFAP3
Other Names	KIFAP3, DJ190I16.1, FLA3, KIF3AP, KAP-1, KAP-3, Smg GDS-associated protein, Smg-GDS, SMAP, KAP3, Kinesin-associated protein 3
Accession No.	Swiss-Prot#: Q92845NCBI Gene ID:22920
Uniprot	Q92845
GeneID	22920;
Calculated MW	100 kDa
Concentration	1.0mg/mL
Formulation	Liquid in 0.42% Potassium phosphate, 0.87% Sodium chloride, pH 7.3, 30% glycerol, and 0.01% sodium azide.
Storage	Store at -20°C

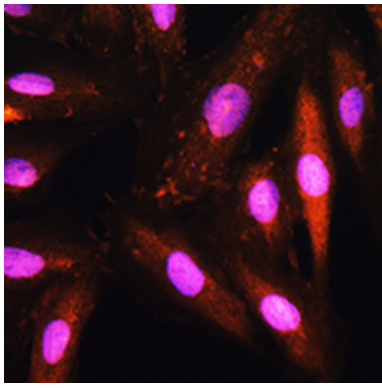
## Application Details

WB (1/500 - 1/2000), IF/IC (1/50 - 1/200)

## Images



Western blot analysis of KAP3 expression in SHSY5Y (A), mouse brain (B), rat lung (C) whole cell lysates.



Immunofluorescent analysis of KAP3 staining in H9C2 cells. Formalin-fixed cells were permeabilized with 0.1% Triton X-100 in TBS for 5-10 minutes and blocked with 3% BSA-PBS for 30 minutes at room temperature. Cells were probed with the primary antibody in 3% BSA-PBS and incubated overnight at 4 °C in a humidified chamber. Cells were washed with PBST and incubated with a AF594-conjugated secondary antibody (red) in PBS at room temperature in the dark. DAPI was used to stain the cell nuclei (blue).

---

Note: This product is for in vitro research use only