

SUCLA2 antibody

Catalog No: #23092

Orders: order@signalwayantibody.com

Support: tech@signalwayantibody.com

Description

Product Name	SUCLA2 antibody
Host Species	Rabbit
Clonality	Polyclonal
Purification	Purified by antigen-affinity chromatography.
Applications	WB IHC IF
Species Reactivity	Hu
Immunogen Type	Recombinant protein
Immunogen Description	Recombinant protein fragment contain a sequence corresponding to a region within amino acids 138 and 386 of human SUCLA2
Target Name	SUCLA2
Accession No.	Swiss-Prot:Q9P2R7 Gene ID:8803
Uniprot	Q9P2R7
GeneID	8803;
Concentration	1mg/ml
Formulation	Supplied in 0.1M Tris-buffered saline with 10% Glycerol (pH7.0). 0.01% Thimerosal was added as a preservative.
Storage	Store at -20°C for long term preservation (recommended). Store at 4°C for short term use.

Application Details

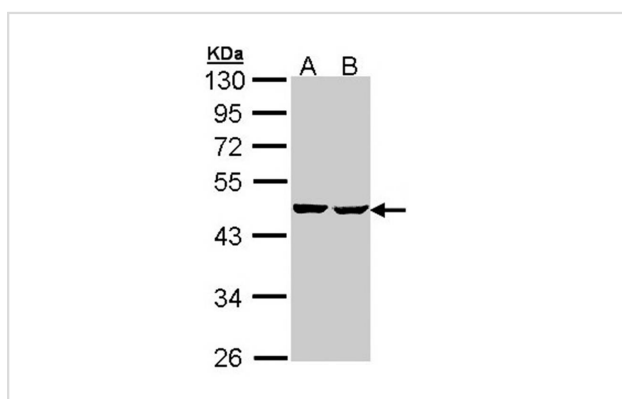
Predicted MW: 50kd

Western blotting: 1:500-1:3000

Immunohistochemistry: 1:50-1:500

Immunofluorescence: 1:100-1:200

Images



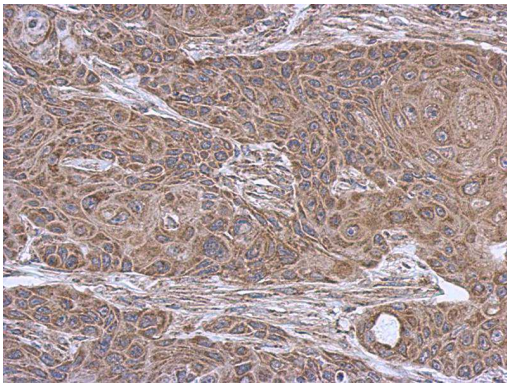
Sample (30 ug of whole cell lysate)

A: Hep G2

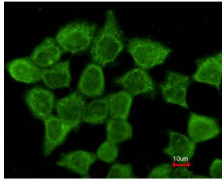
B: Molt-4

10% SDS PAGE

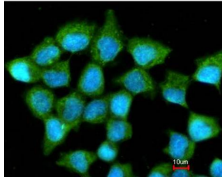
Primary antibody diluted at 1: 1000



Immunohistochemical analysis of paraffin-embedded Cal27 xenograft, using SUCLA2 antibody at 1: 500 dilution.



Costained with Hoechst 33342



Immunofluorescence analysis of methanol-fixed A431, using SUCLA2 antibody at 1: 200 dilution.

Background

Succinyl-CoA synthetase (SCS) is a mitochondrial matrix enzyme that acts as a heterodimer, being composed of an invariant alpha subunit and a substrate-specific beta subunit. The protein encoded by this gene is an ATP-specific SCS beta subunit that dimerizes with the SCS alpha subunit to form SCS-A, an essential component of the tricarboxylic acid cycle. SCS-A hydrolyzes ATP to convert succinate to succinyl-CoA. Defects in this gene are a cause of myopathic mitochondrial DNA depletion syndrome. A pseudogene of this gene has been found on chromosome 6. [provided by RefSeq]

Note: This product is for in vitro research use only