

MEMO1 Antibody

Catalog No: #45296

Package Size: #45296-1 50ul #45296-2 100ul

Orders: order@signalwayantibody.comSupport: tech@signalwayantibody.com

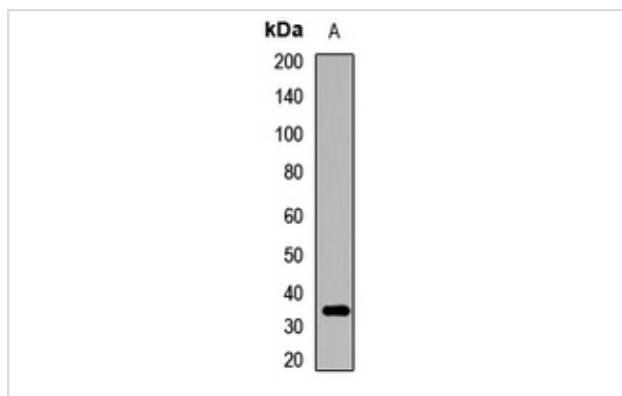
Description

Product Name	MEMO1 Antibody
Host Species	Rabbit
Clonality	Polyclonal
Purification	Immunogen affinity purified
Applications	WB, IH
Species Reactivity	Hu
Specificity	MEMO1 Antibody detects endogenous levels of total MEMO1
Immunogen Type	Peptide
Immunogen Description	A synthesized peptide derived from human MEMO1
Target Name	MEMO1
Other Names	MEMO1, C2orf4, Mediator of cell motility 1, MEMO, Protein MEMO1, NS5ATP7, C21orf19-like protein, CGI-27, Memo-1
Accession No.	Swiss-Prot#: Q9Y316NCBI Gene ID:51072
Uniprot	Q9Y316
GeneID	51072;
Calculated MW	33 kDa
Concentration	1.0mg/mL
Formulation	Rabbit IgG in phosphate buffered saline , pH 7.4, 150mM NaCl, 0.02% sodium azide and 50% glycerol.
Storage	Store at -20°C

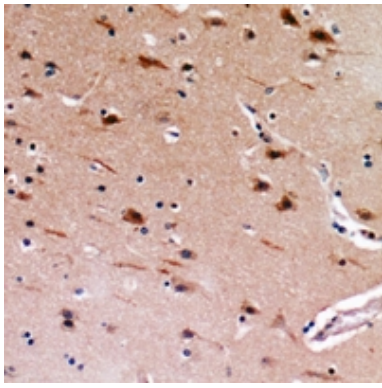
Application Details

WB (1/500 - 1/2000), IH (1/50 - 1/200)

Images



Western blot analysis of MEMO1 expression in mouse heart (A) whole cell lysates.



Immunohistochemical analysis of MEMO1 staining in human brain formalin fixed paraffin embedded tissue section. The section was pre-treated using heat mediated antigen retrieval with sodium citrate buffer (pH 6.0). The section was then incubated with the antibody at room temperature and detected using an HRP conjugated compact polymer system. DAB was used as the chromogen. The section was then counterstained with haematoxylin and mounted with DPX.

Note: This product is for in vitro research use only