

TSG101 Antibody

Catalog No: #45299

Package Size: #45299-1 50ul #45299-2 100ul

Orders: order@signalwayantibody.com

Support: tech@signalwayantibody.com

Description

Product Name	TSG101 Antibody
Host Species	Rabbit
Clonality	Polyclonal
Purification	Immunogen affinity purified
Applications	WB,IHC,IF/ICC,ELISA(peptide)
Species Reactivity	Human Mouse, Rat, Monkey
Specificity	TSG101 Antibody detects endogenous levels of total TSG101
Immunogen Type	Peptide
Immunogen Description	A synthesized peptide derived from human TSG101
Target Name	TSG101
Other Names	TSG101, ESCRT-I complex subunit TSG101, Tumor susceptibility gene 10, Tumor susceptibility protein, VPS23, Tumor susceptibility gene 101, TSG10
Accession No.	Swiss-Prot#: Q99816NCBI Gene ID:7251
Uniprot	Q99816
GeneID	7251;
Calculated MW	45 kDa
Concentration	1.0mg/mL
Formulation	Rabbit IgG in phosphate buffered saline , pH 7.4, 150mM NaCl, 0.02% sodium azide and 50% glycerol.
Storage	Store at -20°C

Application Details

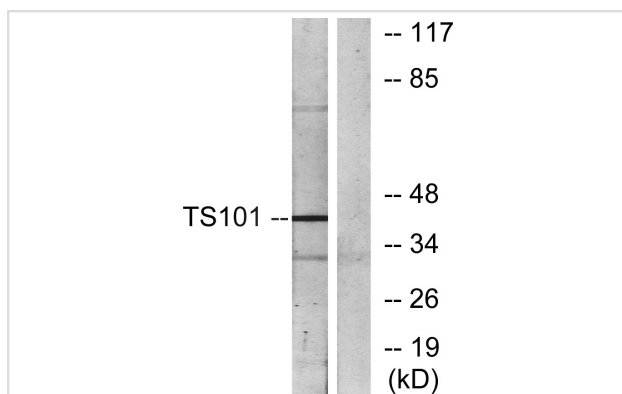
Western blotting: 1:1000-3000

IF/ICC 1:100-1:500

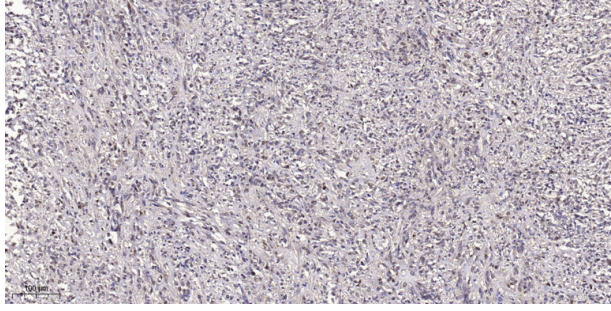
IHC 1:50-1:200

ELISA(peptide) 1:20000-1:40000

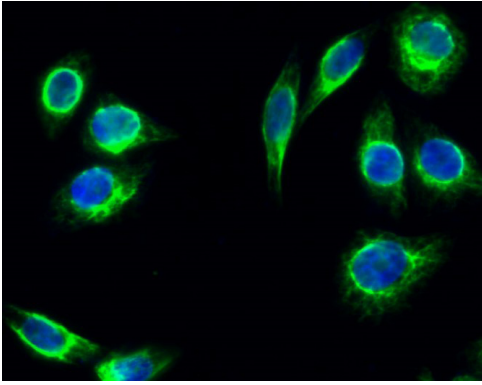
Images



Western blot analysis of lysates from COS7 cells, using TS101 Antibody. The lane on the right is blocked with the synthesized peptide.



Immunohistochemical analysis of paraffin-embedded human small intestinal carcinoma tissue. 1,primary Antibody was diluted at 1:200(4° overnight). 2, Sodium citrate pH 6.0 was used for antigen retrieval(>98°C,20min). 3,Secondary antibody was diluted at 1:200



Immunofluorescence analysis of HeLa cell. 1,Tsg 101 Polyclonal Antibody(green) was diluted at 1:200(4° overnight). 2, Goat Anti Rabbit Alexa Fluor 488 Catalog:RS3211 was diluted at 1:1000(room temperature, 50min). 3 DAPI(blue) 10min.

Note: This product is for in vitro research use only