

Erbin Antibody

Catalog No: #45342

Package Size: #45342-1 50ul #45342-2 100ul

Orders: order@signalwayantibody.com

Support: tech@signalwayantibody.com

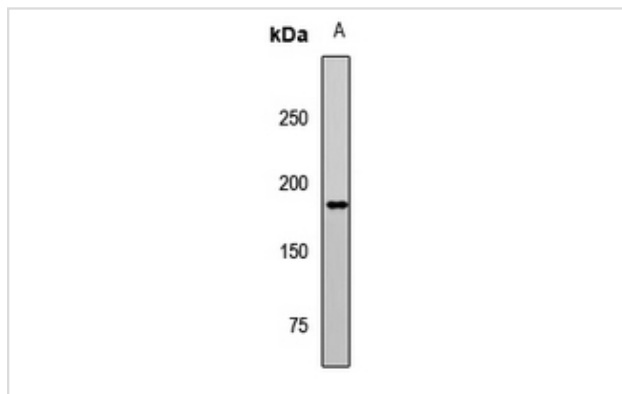
Description

Product Name	Erbin Antibody
Host Species	Rabbit
Clonality	Polyclonal
Purification	Immunogen affinity purified
Applications	WB
Species Reactivity	Hu
Specificity	Erbin Antibody detects endogenous levels of total Erbin
Immunogen Type	Peptide
Immunogen Description	A synthesized peptide derived from human Erbin
Target Name	Erbin
Other Names	ERBB2IP, ErbB2-interacting protein, ERBIN, ErbB2 interacting protein, KIAA1225, Protein LAP2, LAP2, Densin-180-like protein
Accession No.	Swiss-Prot#: Q96RT1NCBI Gene ID:55914
Uniprot	Q96RT1
GeneID	55914;
Calculated MW	158 kDa
Concentration	1.0mg/mL
Formulation	Liquid in 0.42% Potassium phosphate, 0.87% Sodium chloride, pH 7.3, 30% glycerol, and 0.01% sodium azide.
Storage	Store at -20°C

Application Details

WB (1/500 - 1/2000)

Images



Western blot analysis of Erbin expression in HepG2 (A) whole cell lysates.

Note: This product is for in vitro research use only