

Na<sup>+</sup> CP type I alpha Antibody

Catalog No: #45366

Package Size: #45366-1 50ul #45366-2 100ul

Orders: order@signalwayantibody.com

Support: tech@signalwayantibody.com

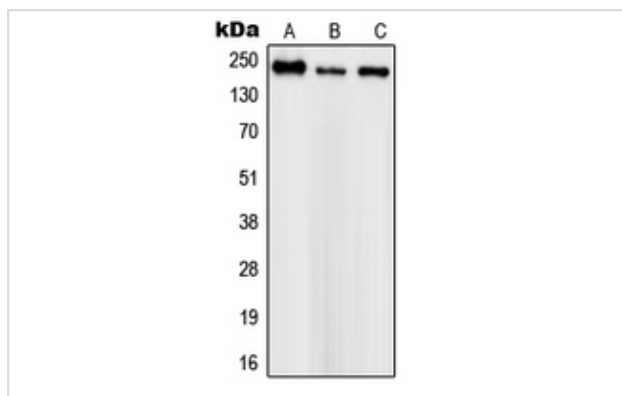
## Description

Product Name	Na <sup>+</sup> CP type I alpha Antibody
Host Species	Rabbit
Clonality	Polyclonal
Purification	Immunogen affinity purified
Applications	WB
Species Reactivity	Hu Ms Rt
Specificity	Na <sup>+</sup> CP type I alpha Antibody detects endogenous levels of total Na <sup>+</sup> CP type I alpha
Immunogen Type	Peptide
Immunogen Description	A synthesized peptide derived from human Na <sup>+</sup> CP type I alpha
Target Name	Na <sup>+</sup> CP type I alpha
Other Names	SCN1A, Brain sodium channel type I, FEB3A, FHM3, GEFSP2, EIEE6, HBSC I, HBSCI, GEFS+2, NAC1, Nav1.1, SCN1, SMEI, FEB3, Febrile convulsions 3, RBI
Accession No.	Swiss-Prot#: P35498NCBI Gene ID:6323
Uniprot	P35498
GeneID	6323;
Calculated MW	228 kDa
Concentration	1.0mg/mL
Formulation	Rabbit IgG in phosphate buffered saline , pH 7.4, 150mM NaCl, 0.02% sodium azide and 50% glycerol.
Storage	Store at -20°C

## Application Details

Western blotting: 1:1000-3000

## Images



Western blot analysis of Na<sup>+</sup> CP type I alpha expression in SHSY5Y (A), mouse brain (B), PC12 (C) whole cell lysates.

---

Note: This product is for in vitro research use only