

## SEMA3A Antibody

Catalog No: #45391

Package Size: #45391-1 50ul #45391-2 100ul

Orders: order@signalwayantibody.com

Support: tech@signalwayantibody.com

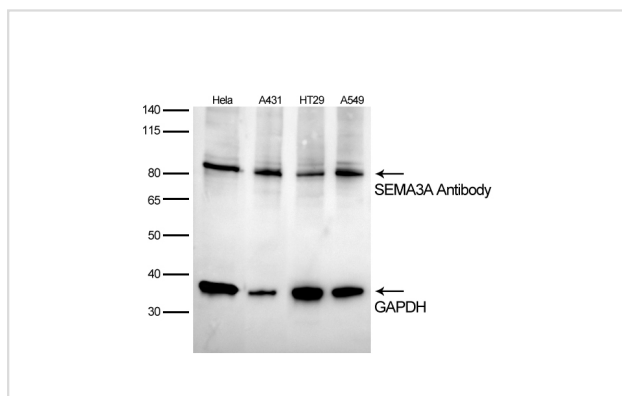
## Description

Product Name	SEMA3A Antibody
Host Species	Rabbit
Clonality	Polyclonal
Purification	Immunogen affinity purified
Applications	WB
Species Reactivity	Hu
Specificity	SEMA3A Antibody detects endogenous levels of total SEMA3A
Immunogen Type	Peptide
Immunogen Description	A synthesized peptide derived from human SEMA3A
Target Name	SEMA3A
Other Names	SEMA3A, Collapsin 1, Coll-1, Hsema-III, Hsema-I, Sema III, SEMAIII, SEMAL, Semaphorin III, Semaphorin-3A, Semaphorin-iii (hsema-i), SemD, SEMA1, Semaphorin D, COLL1, SEMAD, Semaphorin 3A, Semaphorin L
Accession No.	Swiss-Prot#: Q14563NCBI Gene ID:10371
Uniprot	Q14563
GeneID	10371;
Calculated MW	88 kDa
Concentration	1.0mg/mL
Formulation	Rabbit IgG in phosphate buffered saline , pH 7.4, 150mM NaCl, 0.02% sodium azide and 50% glycerol.
Storage	Store at -20°C

## Application Details

Western blotting: 1:1000-3000

## Images



Western blot analysis of extracts of various cell lines, using SEMA3A at 1:500 dilution.

---

Note: This product is for in vitro research use only