

## SEMA3F Antibody

Catalog No: #45393

Package Size: #45393-1 50ul #45393-2 100ul

Orders: [order@signalwayantibody.com](mailto:order@signalwayantibody.com)Support: [tech@signalwayantibody.com](mailto:tech@signalwayantibody.com)

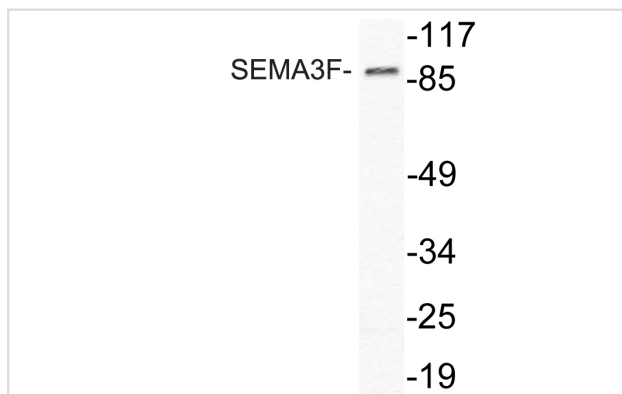
## Description

Product Name	SEMA3F Antibody
Host Species	Rabbit
Clonality	Polyclonal
Purification	Immunogen affinity purified
Applications	WB
Species Reactivity	Hu Ms Rt
Specificity	SEMA3F Antibody detects endogenous levels of total SEMA3F
Immunogen Type	Peptide
Immunogen Description	A synthesized peptide derived from human SEMA3F
Target Name	SEMA3F
Other Names	SEMA3F, Semaphorin III/F, Semaphorin IV, Semaphorin-3F, Sema III/F, Sema IV, SEMA-IV, SEMA4, SEMAK
Accession No.	Swiss-Prot#: Q13275NCBI Gene ID:6405
Uniprot	Q13275
GeneID	6405;
Calculated MW	88 kDa
Concentration	1.0mg/mL
Formulation	Liquid in PBS containing 50% glycerol, 0.5% BSA and 0.02% sodium azide.
Storage	Store at -20°C

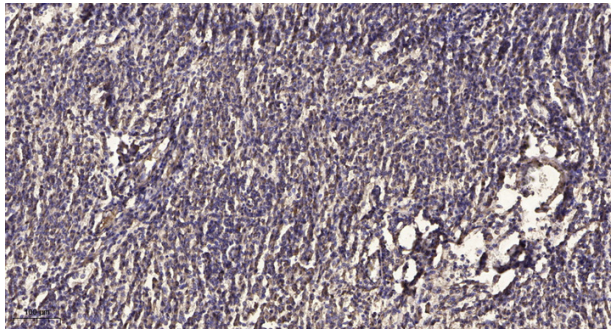
## Application Details

Western blotting: 1:1000-3000

## Images



Western blot analysis of lysate from HeLa cells, using SEMA3F antibody.



Immunohistochemical analysis of paraffin-embedded human meningioma. 1, Antibody was diluted at 1:200(4° overnight). 2, Tris-EDTA,pH9.0 was used for antigen retrieval. 3,Secondary antibody was diluted at 1:200(room temperature, 45min).

---

Note: This product is for in vitro research use only