

Ik3-1 Antibody

Catalog No: #45422

Package Size: #45422-1 50ul #45422-2 100ul

Orders: order@signalwayantibody.com

Support: tech@signalwayantibody.com

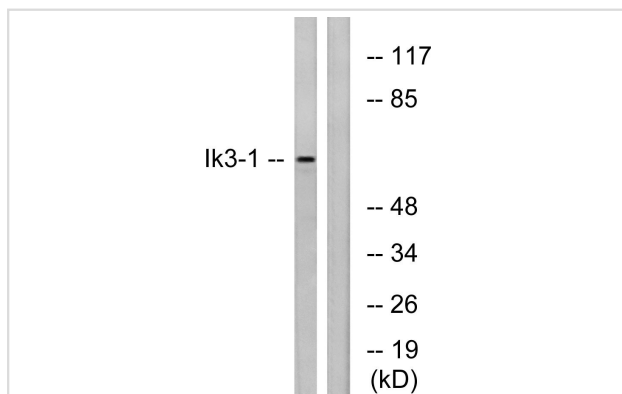
Description

Product Name	Ik3-1 Antibody
Host Species	Rabbit
Clonality	Polyclonal
Purification	Immunogen affinity purified
Applications	WB
Species Reactivity	Hu Ms
Specificity	Ik3-1 Antibody detects endogenous levels of total Ik3-1
Immunogen Type	Peptide
Immunogen Description	A synthesized peptide derived from human Ik3-1
Target Name	Ik3-1
Other Names	CABLES1, CABL1, IK3-1, HsT2563, CABLES, Interactor with CDK3 1
Accession No.	Swiss-Prot#: Q8TDN4NCBI Gene ID:91768
Uniprot	Q8TDN4
GeneID	91768;
Calculated MW	67 kDa
Concentration	1.0mg/mL
Formulation	Liquid in PBS containing 50% glycerol, 0.5% BSA and 0.02% sodium azide.
Storage	Store at -20°C

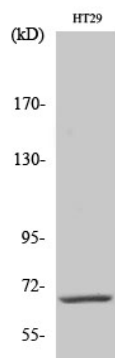
Application Details

Western blotting: 1:1000-3000

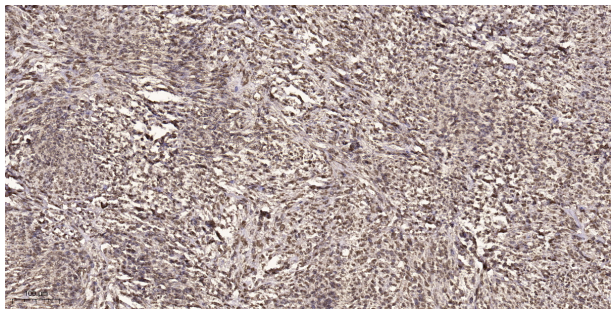
Images



Western blot analysis of lysates from LOVO cells, using Ik3-1 Antibody. The lane on the right is blocked with the synthesized peptide.



Western Blot analysis of various cells using Cables1 Polyclonal Antibody diluted at 1:500



Immunohistochemical analysis of paraffin-embedded human small intestinal carcinoma tissue. 1,primary Antibody was diluted at 1:200(4° overnight). 2, Sodium citrate pH 6.0 was used for antigen retrieval(>98°C,20min). 3,Secondary antibody was diluted at 1:233

Note: This product is for in vitro research use only