

OR2A25 Antibody

Catalog No: #45437

Package Size: #45437-1 50ul #45437-2 100ul

Orders: order@signalwayantibody.comSupport: tech@signalwayantibody.com

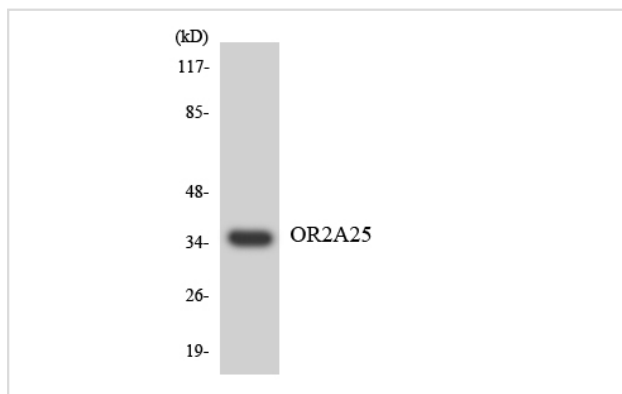
Description

Product Name	OR2A25 Antibody
Host Species	Rabbit
Clonality	Polyclonal
Purification	Immunogen affinity purified
Applications	WB
Species Reactivity	Hu
Specificity	OR2A25 Antibody detects endogenous levels of total OR2A25
Immunogen Type	Peptide
Immunogen Description	A synthesized peptide derived from human OR2A25
Target Name	OR2A25
Other Names	OR2A25, Olfactory receptor 2A25, Olfactory receptor 2A27, OR2A27, OR2A24P, OR2A25P
Accession No.	Swiss-Prot#: A4D2G3NCBI Gene ID:392138
Uniprot	A4D2G3
GeneID	392138;
Calculated MW	34 kDa
Concentration	1.0mg/mL
Formulation	Liquid in PBS containing 50% glycerol, 0.5% BSA and 0.02% sodium azide.
Storage	Store at -20°C

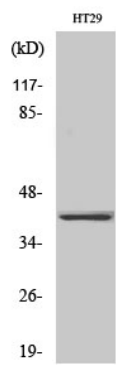
Application Details

Western blotting: 1:1000-3000

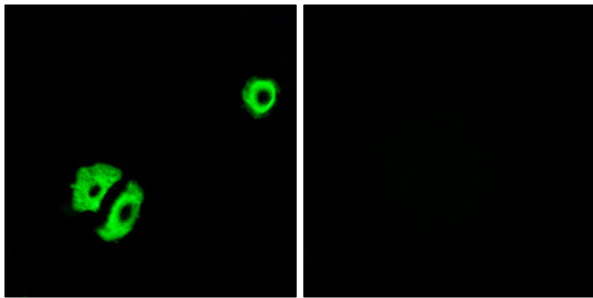
Images



Western blot analysis of the lysates from HepG2 cells using OR2A25 antibody.



Western Blot analysis of various cells using Olfactory receptor 2A25 Polyclonal Antibody



Immunofluorescence analysis of A549 cells, using OR2A25 Antibody. The picture on the right is blocked with the synthesized peptide.

Note: This product is for in vitro research use only