

## RASSF1 antibody

Catalog No: #23115

Orders: order@signalwayantibody.com

Support: tech@signalwayantibody.com

## Description

Product Name	RASSF1 antibody
Host Species	Rabbit
Clonality	Polyclonal
Purification	Purified by antigen-affinity chromatography.
Applications	WB IF
Species Reactivity	Hu
Immunogen Type	Recombinant protein
Immunogen Description	Recombinant protein fragment contain a sequence corresponding to a region within amino acids 50 and 334 of RASSF1
Target Name	RASSF1
Accession No.	Swiss-Prot:Q9NS23Gene ID:11186
Uniprot	Q9NS23
GeneID	11186;
Concentration	1mg/ml
Formulation	Supplied in 0.1M Tris-buffered saline with 10% Glycerol (pH7.0). 0.01% Thimerosal was added as a preservative.
Storage	Store at -20°C for long term preservation (recommended). Store at 4°C for short term use.

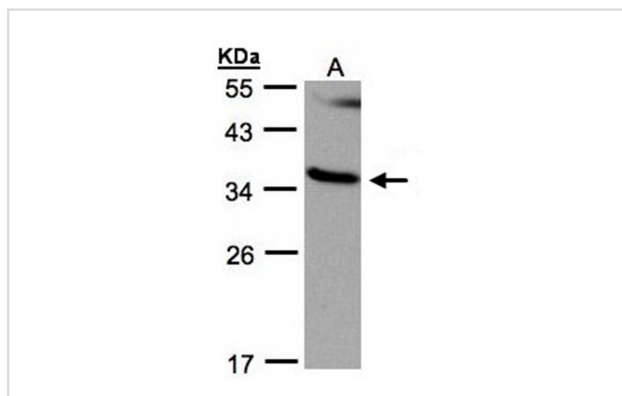
## Application Details

Predicted MW: 39kd

Western blotting: 1:500-1:3000

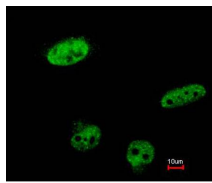
Immunofluorescence: 1:100-1:200

## Images

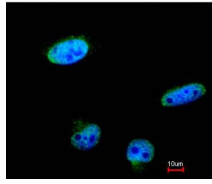


Sample(30 ug whole cell lysate)  
A: 293T  
12% SDS PAGE  
Primary antibody diluted at 1: 500

Immunofluorescence analysis of paraformaldehyde-fixed HeLa, using RASSF1 antibody at 1: 100 dilution.



Merged with DNA probe



## Background

This gene encodes a protein similar to the RAS effector proteins. Loss or altered expression of this gene has been associated with the pathogenesis of a variety of cancers, which suggests the tumor suppressor function of this gene. The inactivation of this gene was found to be correlated with the hypermethylation of its CpG-island promoter region. The encoded protein was found to interact with DNA repair protein XPA. The protein was also shown to inhibit the accumulation of cyclin D1, and thus induce cell cycle arrest. Seven alternatively spliced transcript variants of this gene encoding distinct isoforms have been reported. [provided by RefSeq]

Note: This product is for in vitro research use only