

CS061 Antibody

Catalog No: #45552

Package Size: #45552-1 50ul #45552-2 100ul

Orders: order@signalwayantibody.com

Support: tech@signalwayantibody.com

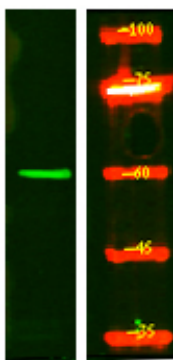
Description

Product Name	CS061 Antibody
Host Species	Rabbit
Clonality	Polyclonal
Purification	Immunogen affinity purified
Applications	WB
Species Reactivity	Hu Ms Rt
Specificity	CS061 Antibody detects endogenous levels of total CS061
Immunogen Type	Peptide
Immunogen Description	A synthesized peptide derived from human CS061
Target Name	CS061
Other Names	SMG9, C19orf61, F17127_1, Protein smg-9 homolog, Protein SMG9
Accession No.	Swiss-Prot#: Q9H0W8NCBI Gene ID:56006
Uniprot	Q9H0W8
GeneID	56006;
Calculated MW	58 kDa
Concentration	1.0mg/mL
Formulation	Liquid in PBS containing 50% glycerol, and 0.02% sodium azide.
Storage	Store at -20°C

Application Details

Western blotting: 1:1000-3000

Images



Western Blot analysis of HEK293 lysates, using primary antibody at 1:1000 dilution.

Note: This product is for in vitro research use only