

RBPJL Antibody

Catalog No: #45561

Package Size: #45561-1 50ul #45561-2 100ul

Orders: order@signalwayantibody.com

Support: tech@signalwayantibody.com

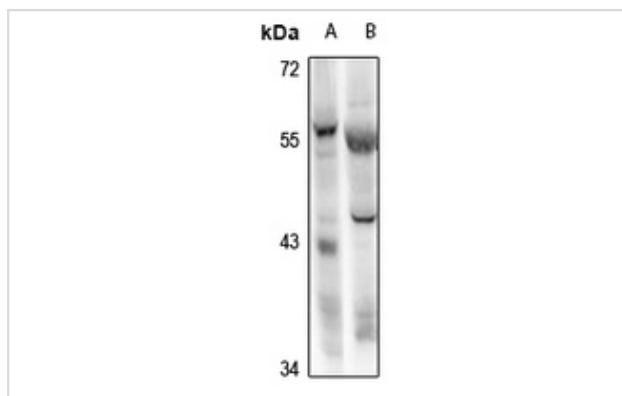
Description

Product Name	RBPJL Antibody
Host Species	Rabbit
Clonality	Polyclonal
Purification	Immunogen affinity purified
Applications	WB
Species Reactivity	Hu Ms
Specificity	RBPJL Antibody detects endogenous levels of total RBPJL
Immunogen Type	Peptide
Immunogen Description	A synthesized peptide derived from human RBPJL
Target Name	RBPJL
Other Names	RBPJL, RBP-L, RBPSUHL, SUHL, SUH, RBPL, Transcription factor RBP-L
Accession No.	Swiss-Prot#: Q9UBG7NCBI Gene ID:11317
Uniprot	Q9UBG7
GeneID	11317;
Calculated MW	57 kDa
Concentration	1.0mg/mL
Formulation	Liquid in 0.42% Potassium phosphate, 0.87% Sodium chloride, pH 7.3, 30% glycerol, and 0.01% sodium azide.
Storage	Store at -20°C

Application Details

WB (1/500 - 1/1000)

Images



Western blot analysis of RBPJL expression in Myla2059 (A), mouse pancreas (B) whole cell lysates.

Note: This product is for in vitro research use only