

Collagen XVI  $\alpha$ 1 Antibody

Catalog No: #45579

Package Size: #45579-1 50ul #45579-2 100ul

Orders: order@signalwayantibody.com

Support: tech@signalwayantibody.com

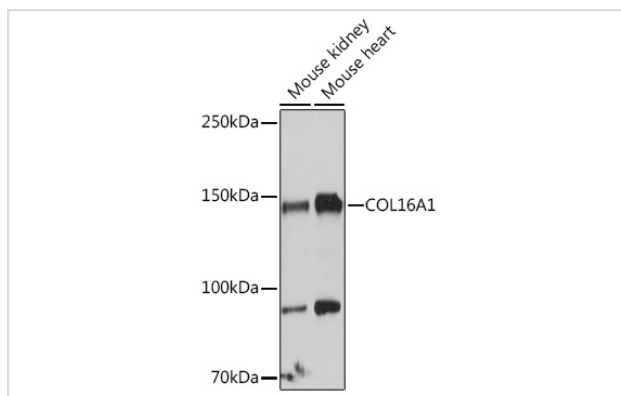
## Description

Product Name	Collagen XVI $\alpha$ 1 Antibody
Host Species	Rabbit
Clonality	Polyclonal
Purification	Immunogen affinity purified
Applications	WB
Species Reactivity	Hu Ms
Specificity	Collagen XVI $\alpha$ 1 Antibody detects endogenous levels of total Collagen XVI $\alpha$ 1
Immunogen Type	Peptide
Immunogen Description	A synthesized peptide derived from human Collagen XVI $\alpha$ 1
Target Name	Collagen XVI $\alpha$ 1
Other Names	COL16A1, 447AA, Alpha 1 type XVI collagen, Collagen, type XVI, alpha 1, Collagen alpha 1(xvi), Collagen alpha-1(XVI) chain, FP1572
Accession No.	Swiss-Prot#: Q07092NCBI Gene ID:1307
Uniprot	Q07092
GeneID	1307;
Calculated MW	157 kDa
Concentration	1.0mg/mL
Formulation	Rabbit IgG in phosphate buffered saline , pH 7.4, 150mM NaCl, 0.02% sodium azide and 50% glycerol.
Storage	Store at -20°C

## Application Details

Western blotting: 1:1000-3000

## Images



Western blot analysis of extracts of various cell lines, using Collagen XVI  $\alpha$ 1 antibody at 1:1000 dilution. Secondary antibody: HRP Goat Anti-Rabbit IgG (H+L) at 1:10000 dilution. Lysates/proteins: 25ug per lane. Blocking buffer: 3% nonfat dry milk in TBST. Exposure time: 10s.

---

Note: This product is for in vitro research use only