

Cytochrome c Oxidase 7C Antibody

Catalog No: #45589

Package Size: #45589-1 50ul #45589-2 100ul

Orders: order@signalwayantibody.com

Support: tech@signalwayantibody.com

Description

Product Name	Cytochrome c Oxidase 7C Antibody
Host Species	Rabbit
Clonality	Polyclonal
Purification	Immunogen affinity purified
Applications	WB, IHC, ELISA
Species Reactivity	Hu Ms Rt
Immunogen Type	Peptide
Immunogen Description	A synthesized peptide derived from human Cytochrome c Oxidase 7C
Target Name	Cytochrome c Oxidase 7C
Other Names	COX7C
Accession No.	Swiss-Prot#: P15954NCBI Gene ID:1350
Uniprot	P15954
GeneID	1350;
Calculated MW	7 kDa
Concentration	1.2 mg/mL
Formulation	pH7.4 PBS, 0.05% NaN ₃ , 40% Glycerol
Storage	Store at -20°C

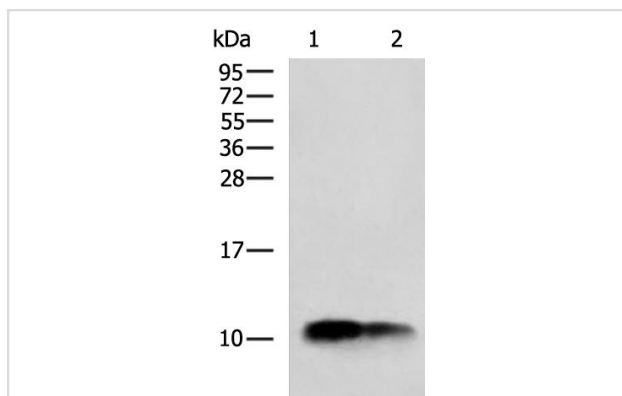
Application Details

WB 1:500-1:2000

IHC 1:50-1:200

ELISA 1oO 5000-1oO 10000

Images



Gel: 12%SDS-PAGE

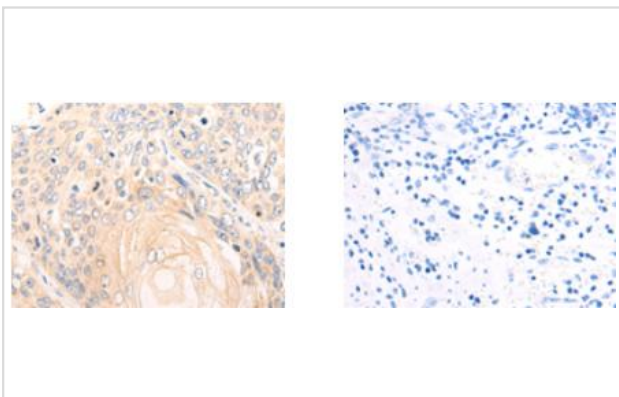
Lysate: 40 μ g

Lane 1-2: Mouse heart tissue, Mouse kidney tissue lysates

Primary antibody: 1/700

Secondary antibody: at 1/5000 dilution

Exposure time: 10 seconds



The image on the left is immunohistochemistry of paraffinembedded Human esophagus cancer tissue using(COX7C Antibody) at dilution 1/50, on the right is treated with synthetic peptide. (Original magnification: $\times 200$)

Note: This product is for in vitro research use only