

## Cytochrome P450 46A1 Antibody

Catalog No: #45592

Package Size: #45592-1 50ul #45592-2 100ul

Orders: order@signalwayantibody.com

Support: tech@signalwayantibody.com

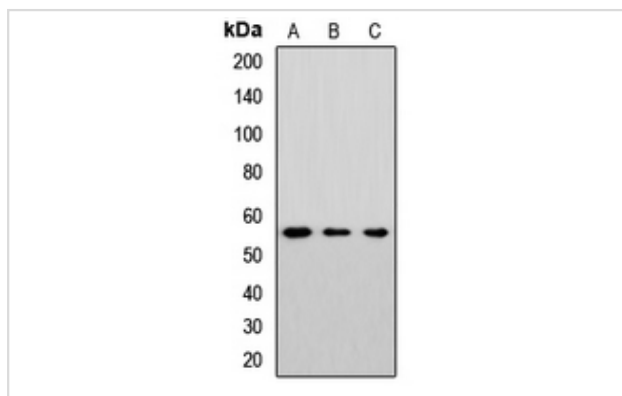
## Description

Product Name	Cytochrome P450 46A1 Antibody
Host Species	Rabbit
Clonality	Polyclonal
Purification	Immunogen affinity purified
Applications	WB, IH
Species Reactivity	Hu Ms
Specificity	Cytochrome P450 46A1 Antibody detects endogenous levels of total Cytochrome P450 46A1
Immunogen Type	Peptide
Immunogen Description	A synthesized peptide derived from human Cytochrome P450 46A1
Target Name	Cytochrome P450 46A1
Other Names	CYP46A1, Cytochrome P450 46A1, Cholesterol 24-hydroxylase, CH24H, CP46, CYP46
Accession No.	Swiss-Prot#: Q9Y6A2NCBI Gene ID:10858
Uniprot	Q9Y6A2
GeneID	10858;
Calculated MW	57 kDa
Concentration	1.0mg/mL
Formulation	Liquid in 0.42% Potassium phosphate, 0.87% Sodium chloride, pH 7.3, 30% glycerol, and 0.01% sodium azide.
Storage	Store at -20°C

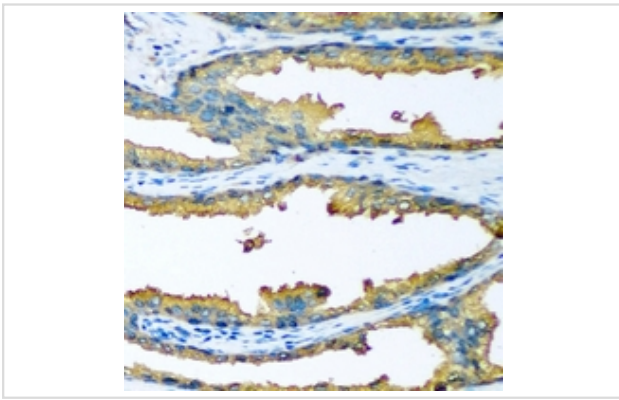
## Application Details

WB (1/500 - 1/2000), IH (1/50 - 1/200)

## Images



Western blot analysis of Cytochrome P450 46A1 expression in MCF7 (A), mouse brain (B), rat liver (C) whole cell lysates.



Immunohistochemical analysis of Cytochrome P450 46A1 staining in human prostate cancer formalin fixed paraffin embedded tissue section. The section was pre-treated using heat mediated antigen retrieval with sodium citrate buffer (pH 6.0). The section was then incubated with the antibody at room temperature and detected using an HRP conjugated compact polymer system. DAB was used as the chromogen. The section was then counterstained with haematoxylin and mounted with DPX.

---

Note: This product is for in vitro research use only