

## CRLF1 Antibody

Catalog No: #45596

Package Size: #45596-1 50ul #45596-2 100ul

Orders: [order@signalwayantibody.com](mailto:order@signalwayantibody.com)Support: [tech@signalwayantibody.com](mailto:tech@signalwayantibody.com)

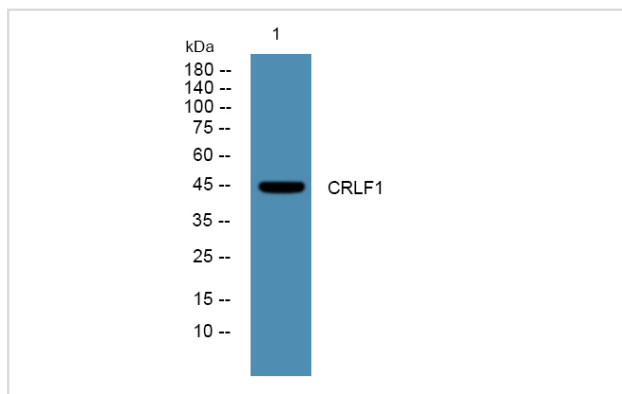
## Description

|                       |   |
|-----------------------|---|
| Product Name          | CRLF1 Antibody  |
| Host Species          | Rabbit  |
| Clonality             | Polyclonal  |
| Purification          | Immunogen affinity purified   |
| Applications          | WB  |
| Species Reactivity    | Hu Ms   |
| Specificity           | CRLF1 Antibody detects endogenous levels of total CRLF1   |
| Immunogen Type        | Peptide   |
| Immunogen Description | A synthesized peptide derived from human CRLF1  |
| Target Name           | CRLF1   |
| Other Names           | CRLF1, CISS1, Cytokine-like factor 1, CISS, CLF, CLF-1, NR6, Zcytor5, Class I cytokine receptor |
| Accession No.         | Swiss-Prot#: O75462NCBI Gene ID:9244  |
| Uniprot               | O75462  |
| GeneID                | 9244;   |
| Calculated MW         | 46 kDa  |
| Concentration         | 1.0mg/mL  |
| Formulation           | Liquid in PBS containing 50% glycerol, and 0.02% sodium azide.                                  |
| Storage               | Store at -20°C  |

## Application Details

Western blotting: 1:1000-3000

## Images



---

Note: This product is for in vitro research use only